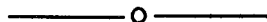


REPUBLIC OF THE MARSHALL ISLANDS



STATISTICAL ABSTRACT

1990 - 1991



Office of Planning and Statistics
P.O. Box 7
Majuro, Marshal Islands 96960



REPUBLIC OF THE MARSHALL ISLANDS

STATISTICAL ABSTRACT

1990 - 1991

Office of Planning and Statistics

P. O. Box 7

Majuro, Marshall Islands 96960

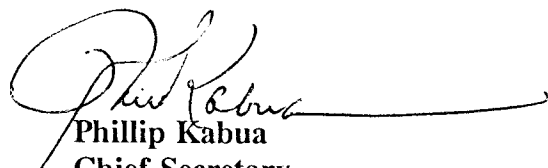
PREFACE

This is the sixth issue of the Marshall Islands Statistical Abstract published by the Office of Planning and Statistics. In this volume an attempt has been made to include, as far as possible, data upto the end of 1991. Data in the Abstract refer to the calendar year except when indicated otherwise.

The collection of data for this Abstract started in March 1992. All appropriate Ministries, public and private bodies were requested to cooperate in the compilation of this bulletin. To a large extent, most of them responded favorably. The production of this Abstract has been made possible by the contributions received from these various Ministries, government divisions, and agencies, private agencies and individuals. However, it is regretted that certain limitations still remain because of our resource constraints. At present no data are available on intra-atoll traffic, banking and insurance and on communication. Furthermore the database for National Accounts needs to be expanded and the Consumer Price Index needs to be revised.

The preparation of the Abstract was in the hands of Mr. M.G.Senanayake, National Statistician, who was assisted by Messrs. Takaji Abo and Caster Konou, the Assistant National Statisticians. When the Asian Development Bank Project for the Institutional Strengthening of the Office of Planning and Statistics was commenced in July 1992, the completion of the work of the Abstract was undertaken as a project training exercise under the advice and guidance of the ADB Project Manager, Dr. H.M. Gunasekera. Mr. Takaji Abo, Assistant National Statistician, Mr. Clary Makroro, assistant Chief Planner, and Mr. Kato Ruben, Planning Officer, took part in the preparation of Tables and Charts as their training exercises. Mr. Francisco Morales, the Data Processing Advisor attached to the Ministry of Finance, provided the training in the use of the computers in this exercise. Administrative support for preparation of the document was given by Ms. Netha Jack and Ms. Tarina Jokon. We wish to thank all these officers for their contributions.

We sincerely hope that the various users of the data, such as the Government, the businesses, individuals, foreign missions, and international agencies and organizations will find the Abstract useful and informative. We welcome comments and suggestions for improvement of the Statistical Abstract series.


Phillip Kabua
Chief Secretary
January 18, 1993.

Statistical Abstract 1990/91
Contents

Preface	i
List of Tables	v
List of Diagrams and Charts	xv
1. Geography	1
1.1 Topography	
1.2 Climate	
2. Population	12
2.1 Demographic Change	
2.2 Resident Population	
2.3 Internal Migration	
2.4 Registered Births and Deaths	
2.5 Estimated Fertility and Mortality	
2.6 Projections of Populations	
3. Social Framework	52
3.1 Households	
3.2 Marriage	
3.3 Citizenship	
4. Education	65
5. Employment	83
6. Primarily Products and Fisheries	102
6.1 Subsistence Activities	
6.2 Estimated Crop Production	
6.3 Copra Production	
6.4 Fisheries	
6.5 Estimated Live Stock Production	
7. Overseas trade	119
8. Consumer Price Index	136
9. Visitor Statistics	141

10. **Public Sector Finance** 154
11. **National Accounts** 165
12. **Miscellaneous Tables** 175
13. **Conversion Factors** 190
14. **Maps of the Marshall Islands** 191

List of Tables:

1.	Geography	
1.1	Geography of the Marshall Islands	3
1.2	Distance between Atolls/Islands (Nautical Miles)	5
1.3	Monthly Rainfall, Majuro 1960-1991 (inches)	6
1.4	Monthly Average, Temperature in Degrees Fahrenheit, Majuro 1960-1991	8
1.5	Average Wind Speed in (M.P.H), Prevailing Direction of Wind, Percentage of Total Possible Sunshine and Relative Humidity by Month, Majuro 1989-1991	10
2.	Population	
2.1	Resident Population of the Republic of the Marshall Islands by Sex. Selected Years 1920-1992	14
2.2	Enumerated Population at Census, Intercensal Increase and Average Annual Growth Rate, 1920-1988	15
2.3	Population by Atoll/Islands - Census Years 1958, 1967, 1973, 1980 and 1988	16
2.4	Intercensal Increase and Average Annual Growth Rates for Atoll/Islands 1980 and 1988 Censuses	17
2.5	Marshall Islands Population by Single Year of Age, 1988	18
2.6	Age Sex Distribution by Five Year Age Groups, Marshall Islands 1989-1992 (Projections)	19
2.7	(a) Age-Sex Distribution for Atoll/Island by Five Year Age Groups, 1988	20
2.7	(b) Age-Sex Distribution for Atoll/Island by Five Year Age Groups, 1988 (Continued)	21

2.7	(c)	Age-Sex Distribution for Atoll/Island by Five Year Age Groups, 1988 (Continued)	22
2.8		Age-Distribution for Atoll/Island by Broad Age Groups and Dependency Ratio, 1988 and 1980	23
2.9		Land Area and Population Density by Atoll and Island	24
2.10		Population and Population Density (in Square Miles) by Rural and Urban Areas, 1973, 1980, and 1988	26
2.11		Population, Percentage 18 year and over and Median Age of Population by Atolls/Islands, Census-1988	27
2.12		Population, Percentage 18 year and over and Median Age of Population by Atolls/Islands, Census-1980	28
2.13		Migration between Atoll/Islands, 1980-1988 (Based on information of previous residence and duration of residence)	29
2.14		In and Out Migration to and from Majuro for 2 year intervals, November 1978-October 1988 by Age Group and Sex	30
2.15		In and Out Migration to and from Ebeye for 2 years intervals, November 1978-October 1988 by Age Group and Sex	31
2.16		Number of Registered Live Births, 1981-1991	32
2.17		Number of Registered Births by Age Group of Mother, 1987-1991	33
2.18		Number of Registered Deaths by Age Group and Sex, 1986-1991	34
2.19	(a)	Number of Registered Deaths by Cause of Death and Sex, 1988-1991	35
2.19	(b)	Number of Registered Deaths by Cause of Death and Sex, 1988-1991 (continued)	36
2.19	(c)	Number of Registered Deaths by Cause of Death and Sex, 1988-1991 (continued)	37
2.19	(d)	Number of Registered Deaths by Cause of Death and Sex, 1988-1991 (continued)	38

2.20	Number of Registered Death by Cause of Death and Sex; Infant Deaths only, 1988-1991	39
2.21	Estimates of Age Specific and Total Fertility Rates, Base on the Census of 1973, 1980 and 1988	40
2.22	Number of Women, Estimated Age Specific Fertility and Estimated Number of Births by Age Groups of Mother, 1989	40
2.23	Indirect Estimates of Infant Mortality, Selected Years	41
2.24	Mid Year Population by Age and Sex and Estimated Age Specific Mortality Rates and Deaths, Marshall Islands, 1989	42
2.25	(a) Abridged Life Table by Sex, Marshall Islands, 1989	43
2.25	(b) Abridged Life Table by Sex, Marshall Islands, 1989 (continued)	44
2.26	Estimation and Projection of the Population (Based on 1973 and 1988 Censuses)	45
2.27	Projection of Population, Marshall Islands, 1990-2000 (Medium Hypothesis)	47
2.28	Projected Total Population According to Four Hypothesis	48
2.29	Two Constant Projection of the total Majuro Population, 1988-2000	50
3.	Social Framework	
3.1	Number of Households and Average Number of Persons per Household, 1980 and 1988 Censuses	54
3.2	Population by Relationship to Head of Household by Atoll/Islands, 1988	55
3.3	(a) Number of Households and Persons by Atoll/Island and Place in Atoll/Island	56
3.3	(b) Number of Households and Persons by Atoll/Island and Place in Atoll/Island (continued)	57
3.3	(c) Number of Households and Persons by Atoll/Island and Place in Atoll/Island (continued)	58

3.3	(d)	Number of Households and Persons by Atoll/Island and Place in Atoll/Island (continued)	59
3.3	(e)	Number of Households and Persons by Atoll/Island and Place in Atoll/Island (continued)	60
3.4		Marital Status by Age and Sex, 1988	61
3.5		Marital Status by Age and Sex, Census 1980	62
3.6		Population by Citizenship for Atoll/Island, 1988	63
3.7		Population by Citizenship, 1988	64
3.8		Population by Ethnic Origin, 1980	64
4.		Education	
4.1		Public Primary Schools Pupils by Atoll/Island, 1982/1983-1991/92	67
4.2		Public Primary Schools by Atoll/Island, 1982/1983-1991/1992	68
4.3		Private Primary Schools by Atoll/Island, 1982/1983-1991/1992	69
4.4		Private Primary School Pupils by Atolls/Islands 1982/19883-1919/92	69
4.5		Public Primary School Teachers and Number of Students per Teacher by Atoll Island, 1984/1985-1991/1992	70
4.6		Private Primary School Teachers and Number of Students per Teacher by Atoll/Island 1983/1984-1991/92	71
4.7		Number of Teachers and Pupils in Public and Private Secondary Schools by Atolls, Enrollment Years 1987/1988 and 1991/92	72
4.8		Public Primary and Secondary School Enrollment by Grade and Sex, 1983/1984-1991/92	73
4.9		Number of Students Graduated in June 1989, 1990 1991 from Eight Grade by Sex & Atoll, Public Schools only	76
4.10		Private Primary and Secondary School Enrollment by Grade and Sex, 1982/83-1991/1992	77

4.11	(a)	Students and Drop outs by Field of Study under Scholarships of the Marshall Islands Scholarship, Grant & Loan Board, Academic Year 1988-1989	78
4.11	(b)	Students and Drop outs by Field of Study under Scholarships of the Marshall Islands Scholarship, Grant & Loan Board, Academic Year 1989-1990	79
4.11	(c)	Students and Drop outs by Field of Study under Scholarships of the Marshall Islands Scholarship, Grant & Loan Board, Academic Year 1990-1991	80
4.11	(d)	Students and Drop outs by Field of Study under Scholarships of the Marshall Islands Scholarship, Grant & Loan Board, Academic Year 1991-1992	81
4.12		Student by Age Group and Sex under Scholarship of the Marshall Islands Scholarship, Grant & Loan Board, Academic Year, 1991/92	82
5.		Employment	
5.1		Economically Active, Employed and Unemployed Population-Census 1980	86
5.2		Economically Active, Employed and Unemployed Population Census - 1988	86
5.3		Employed Population by Major Occupational Group - Census 1980	87
5.4		Employed Population by Industry-Census 1980	88
5.5		Employed Population Classified by Major Industry Group and Sex, 1988	89
5.6		Employed Population by Major Occupational Group and Sex, 1988	91
5.7		Employed Population by Class of Worker, Census-1980	94
5.8		Paid Employees in the Public and Private Sector-Selected Years, 1979-1991	95
5.9		Employment Trends by Sector and Source, Selected Years 1973-1988	96
5.10		Employment Rates and Percentages Employed in each Age Group, Marshall Islands, 1988	97
5.11		Age Distribution of the Unemployed and Age Specific Unemployment Rates by Sex, Marshall Islands, 1988	98

5.12	Economicly Active (Employed and Unemployed) Population by Age Group, Both Sexes	100
6.	Primary Product and Fisheries	
6.1	Households Engaged in Subsistence Activities by Type of Activity and Atoll/Island, 1988	104
6.2	Estimated Crop Production for 1989-1991 Marshall Islands (in short ton) . .	105
6.3	(a) Estimated Livestock Production, 1984-1991 (in Numbers)	106
	(b) Estimated Livestock Production, 1984-1991 (in US\$)	106
6.4	Estimated Crop Production for the Years 1984 to 1989, Marshall Islands (in US\$)	107
6.5	Copra Production by Atoll and Islands, 1981-1991 (Short tons)	108
6.6	Percent of Copra production by Atolls/Islands, 1981-1991	110
6.7	Index of Copra Production by Atolls/Islands, 1981-1991 (1978=100)	111
6.8	Copra Prices paid to Outer Islands, 1978-1992 (\$ per short ton)	112
6.9	Total Copra Production and per Capita Copra income in US\$, 1951-1991 .	114
6.10	(a) Total Fish Catches by Japanese Fishing Vessels By type of Fish and Fishing Technique, 1988-1989 (in Metric tons)	116
6.10	(b) Total Fish Catches by Japanese Fishing Vessels By type of Fish and Fishing Technique, 1990-1991 (in Metric tons)	117
6.11	Total Fish Catches by Foreign Fishing Vessels by type of Fish, 1989, (in metric tons, all gear types)	118
7.	<u>Overseas Trade</u>	
7.1	Commodity Imports and Exports and Balance of Trade 1979-1991 (\$000's)	121
7.2	Commercial Imports by Commodity Group, 1976-1982, 1986-1988 (f.o.b. values in \$000's)	123

7.3	Commercial Imports by Commodity Group, Last Quarter 1989, and Years 1990 and 1991 (c.i.f. values in \$000's)	124
7.4	Value of Imported Goods by Major Trading Partner, 1984-1988 (f.o.b. values in \$000's)	125
7.5	Value of Imported Goods by Major Trading Partner, Last Quarter of 1989 and Years 1990 and 1991 (c.i.f. values in \$000's)	126
7.6	Imports to Marshall Islands by Two Digit Harmonized System Codes for the Last Quarter of 1989 and Years 1990 and 1991 (c.i.f. values in \$000's)	128
7.7	Imports to Marshall Islands by Port of Entry, Last Quarter 1989 and Years 1990 and 1991 (c.i.f. values in \$000's)	132
7.8	Oil Imports by Type of oil, Majuro, Ebeye and Jaluit 1986 - 1989 (in US Gallons)	133
7.9	Diesel Imports and Quantities sold to Foreign Vessels, 1986-1988 (Barrels) .	134
7.10	Exports by Commodity 1979-1991 (f.o.b. values in \$000's)	135
8.	<u>Consumer Prices Index</u>	
8.1	Quarterly Consumer Price Index, Majuro, 1982-1991	138
8.2	Change in Consumer Price Index, Majuro, 1982-1991 (Percentage change from corresponding Quarter of Previous Year)	140
9.	<u>Visitors Statistics</u>	
9.1	Visitor Arrivals, Majuro Atoll, 1969-1991	143
9.2	Quarterly Visitor Arrivals by Purpose, 1983-1988	145
9.3	Visitors to the Marshall Islands by Age Group and Sex; 1989 and 1991 . . .	146
9.4	Visitors to the Marshall Islands by Month, 1989 and 1991	147

9.5	Visitors to the Marshall Island by Nationality and main purpose of Visit, 1989 and 1991	148
9.6	Visitors to the Marshall Islands (Visitor Category) by Major Occupation Groups 1989 and 1991	149
9.7	Visitors to the Marshall Islands by Activity and Sex, 1989 and 1991	150
9.8	Tourists by Age Group and Sex, 1989 and 1991	152
9.9	Tourist by Nationality, 1989 and 1991	153
10	<u>Public Sector Finance</u>	
10.1	(a) Combined Statement of Revenues, Expenditures and Change in Fund Balance (Deficit), all Governmental Fund Types and Expendable Trust Fund, year ended September 30, 1990 (with Comparative total for the year ended September 30, 1989)	156
10.1	(b) Combined Statement of Revenues, Expenditures and Change in Fund Balance (Deficit), all Governmental Fund Types and Expendable Trust Fund, year ended September 30, 1991 (with Comparative total for the year ended September 30, 1990)	157
10.2	(a) Statement of Revenues, General and Special Revenues Funds, Years Ended September 30, 1989 and 1990	158
10.2	(b) Statement of Revenues, General and Special Revenues Funds, Years Ended September 30, 1990 and 1991	159
10.3	(a) Expenditures under General and Special Revenue Funds, Years Ended September 30, 1989 and 1990	160
10.3	(b) Expenditures under General and Special Revenue Funds, Years Ended September 30, 1990 and 1991	161
10.4	Combining Statement of Revenues, Expenditure by Function, Capital Projects Funds, Year Ended September 30, 1989, 1990 and 1991	163
10.5	Combining Statement of Revenues and Expenditures, Expendable Trust Funds, Years Ended September 30, 1988 to 1991	164

11 National Accounts

11.1 Gross domestic Product, 1981-1991 (Fiscal Years Ended September 30)
(US \$000), not Corrected for Inflation 167

11.2 (a) Gross Domestic Product of the Republic of the Marshall Islands,
Fiscal Years Ended September 30, 1981-1991, US\$ Millions 169

11.2 (b) Gross Domestic Product of the Marshall Islands, Fiscal Year ended
September 30,1981-1991 in Percentage of the GDP at Market Prices . 170

11.3 Gross Domestic Product by Public and Private Sectors 1981-1991
(in US \$ Millions) 171

11.4 Compensation of Employees, Fiscal Years, 1981-1991 (in US \$ 000 172

11.5 Operating Surplus, Fiscal Years 1981-1984 (in US \$ 000) 173

11.6 Gross Revenue, Revenue Tax and Wages and Salaries of all Private
Enterprises subject to Tax by Principle kind of Activity,
1981 (in US \$ 000) 174

12 Miscellaneous Tables

12.1 Number of Private Sector Motor Vehicles Registered, by Type of Vehicle,
Majuro, 1982-1984 and 1986-1991 177

12.2 Government Vehicles Registered by Ministries and Offices, 1987-1992 178

12.3 Messages to Foreign Countries and Kwajalein through the Majuro
Telephone System, 1988, 1990 and 1991 179

12.4 Number of Radio Conferences from Majuro to Atoll/Islands, 1988-1991 . . . 180

12.5 Number of Dispensaries, Docks and Airfields by Atoll and Islands,
1988, 1989 and 1991 181

12.6 Number of Persons Charged/Found Guilty, by type of offense, 1986-1990 . . 182

12.7 Fresh Water Collection and Consumption by Month (000's Gal); Majuro,
1984-1991 183

12.8	Fresh Water Production and Consumption, Public Water System, Ebeye, Fiscal Year 1989 and 1992 in US Gallons	184
12.9	Consumption and Cost of Fuel and Lubricants, Majuro Power Plant - 1984-1991	185
12.10 (a)	Power Generated, Number of Electricity Consumers, (Business and Domestic) and Revenue Collected, Majuro 1987-1989	186
12.10 (b)	Power Generated, Number of Electricity Consumers, (Business and Domestic) and Revenue Collected, Majuro 1990-1991	187
12.11	Power Generated, Power Distributed and Diesel Consumption of the Ebeye Power Plant, Fiscal year 1989-1991	188
12.12	Energy Capacity From Photovoltaic by Atoll/Islands, 1989 1991	189

List of Maps and Diagrams

Figure-1	Relative Size of Atolls and Islands	4
Figure-2	Average Monthly Rainfall, Majuro 1960-1991	7
Figure-3	Average Monthly Temperature in Degrees Fahrenheit, Majuro 1960-1991	9
Figure-4	Average Windspeed (in M.P.H), Prevailing Direction of wind, Percentage of total possible sunshine and relative humidity by month, Majuro, 1991	11
Figure-5	Total Population and Population Density by Atolls and Islands, 1988	25
Figure-6	Estimation and Projection of Population 1973-2000	46
Figure-7	Projected total Population According to Four Hypothesizes	49
Figure-8	Two Constant Projections of the Total Majuro Population, 1988-2000	51
Figure-9	Public and Private School Enrollment, 1982/83-1990/91	74
Figure-10	School Enrollment by Grade, 1990/91	75
Figure-11	Summary of Economically Active and Not Economically Active Population By Sex-Census 1988, Marshall Islands	85
Figure-12	Employed Population by Industry, 1988	90
Figure-13	Employed Population by Major Occupational Group, 1988	92
Figure-14	Employed Population by Economic Sector, 1988 (in percentage).	93
Figure-15	Age Specific Unemployment Rates, 1988	99
Figure-16	Employed and Unemployed Population by Age Group, 1988	101

Figure-17	Copra Production by Atoll/Island; 1990 and 1991 (in short tons)	109
Figure-18	Copra Prices, 1951 - 1992 (in US\$ Per ton)	113
Figure-19	Total Copra Production, 1951-1992 (in Short Tons)	115
Figure-20	Imports, Exports and Balance of Trade, 1979-1991 (in \$000's)	122
Figure-21	Imports by Major Trading partners, 1991 (in percentages)	127
Figure-22	Quarterly Consumer Price Index, Majuro, 1982-1991	139
Figure-23	Visitors Arrivals to Majuro Atoll, 1981-1991	144
Figure-24	Visitors to the Marshall Islands by Activity, 1991	151
Figure-25	Estimated Gross Domestic Product, 1981-1991 (in \$ Millions), not corrected for inflation)	168
	Map of the Marshall Islands	191
	Maps of selected Atolls and Islands	192

SECTION 1

1. GEOGRAPHY

1. Geography and Climate

The Republic of the Marshall Islands consists of 29 atolls and 5 islands in the Central Pacific between 4 degrees and 14 degrees North and 160 degrees and 173 degrees East. The atolls and islands are situated in two almost parallel chain like formations known as the Ratak group (Sunrise) and Ralik group (Sunset). The total number of islands and islets within the atolls is approximately 1,225, spread over a sea area of 750,000 square miles. The total land area is 70 square miles.

The distance from Majuro, the capital, to Honolulu in the East is 2,136 miles, and to Tokyo to the north-west is 2,300 miles. The capital of the former Trust Territory, Saipan, lies 2,014 miles to the west.

The atoll group has a hot and humid climate. The average temperature is about 81 degree F, (or 27.2 degrees Celsius), with an average relative humidity of 81.3% (in Majuro). Average annual rainfall in Majuro is 132 inches (or 335.3 cm.), the wettest months of the year being October and November. Typically the northern atolls receive a lesser rainfall than those in the South.

The Marshall Islands is generally not considered to be in the typhoon belt. Nevertheless, because the island groups are true atolls with low lying reefs and land mass they are easily flooded during storms and tidal surges.

TABLE: 1.1 Geography of Marshall Islands

No.	Name	Type	Approximate No. of Islets	Area (sq. mi.)		Latitude	Longitude
				Lagoon	Dry Land		
Ratak Chain							
1	Bokak	Atoll	10	30.13	1.25	14 32' 14 42'	168 53' 169 1'
2	Bikar	Atoll	7	14.44	0.19	12 11' 12 18'	170 4' 170 9'
3	Utrok	Atoll	10	22.29	0.94	11 12' 11 12'	169 45' 169 51'
4	Toke	Atoll	6	35.96	0.22	11 5' 11 30'	169 33' 169 40'
5	Mejit	Island	1	—	0.72	10 16' 10 18'	170 52' 70 53'
6	Ailuk	Atoll	55	68.47	2.07	10 12' 10 27'	169 52' 169 59'
7	Jemo	Island	1	—	0.06	10 7'	169 33'
8	Likiep	Atoll	65	163.71	3.96	9 48' 10 4'	168 58' 169 20'
9	Wotje	Atoll	75	241.06	3.16	9 21' 9 32'	169 48' 170 15'
10	Erkub	Atoll	16	88.92	0.59	9 8'	170 0'
11	Maloelap	Atoll	75	375.57	3.79	8 29' 8 55'	170 50' 171 15'
12	Aur	Atoll	43	92.58	2.17	8 7' 8 22'	171 1' 171 12'
13	Majuro	Atoll	64	113.92	3.75	7 3' 7 13'	171 2' 171 58'
14	Arno	Atoll	103	130.77	5.00	6 58' 7 18'	171 33' 171 57'
15	Mili	Atoll	92	294.70	6.15	5 53' 6 16'	171 42' 172 10'
16	Nadikdik	Atoll	18	—	—	—	—
Sub-total			641	1672.52	34.02		

Ralik Chain							
16	Enewetak	Atoll	44	387.99	2.26	11 20' 11 41'	162 17' 162 24'
17	Ujelang	Atoll	30	25.47	0.67	9 46' 9 53'	160 47' 161 0'
18	Bikini	Atoll	36	229.40	2.32	11 29' 11 42'	165 12' 165 34'
19	Rongdrik	Atoll	14	55.38	0.65	11 15' 11 25'	167 22' 167 32'
20	Ronglap	Atoll	61	387.77	3.07	11 9' 11 29'	166 38' 167 4'
21	Ailinginae	Atoll	25	40.91	1.08	11 8' 11 11'	166 17' 166 2'
22	Wotho	Atoll	18	36.65	1.67	10 1' 10 11'	165 54' 165 46'
23	Ujae	Atoll	15	71.79	0.72	8 55' 9 12'	165 30' 166 16'
24	Lae	Atoll	20	6.82	0.56	8 54' 9 2'	166 11' 167 46'
25	Kwajalein	Atoll	93	839.30	6.33	8 48' 9 22'	166 49' 167 25'
26	Lib	Island	1	—	0.36	8 20' 8 22'	167 23' 168 18'
27	Namu	Atoll	54	153.53	2.42	7 45' 8 12'	167 58' 168 59'
28	Jabat	Island	1	—	0.22	7 44' 7 5'	168 58' 168 59'
29	Ailinglaplap	Atoll	56	289.69	5.67	7 16' 7 36'	168 33' 169 44'
30	Jaluit	Atoll	91	266.31	4.38	5 47' 6 18'	169 24' 169 44'
31	Kili	Island	1	—	0.36	5 37' 5 38'	169 7' 169 8'
32	Namdrik	Atoll	2	3.25	1.07	5 35' 5 38'	168 5' 168 9'
33	Ebon	Atoll	22	40.09	2.22	4 34' 4 42'	168 38' 168 47'
Sub-total			584	2834.35	36.03		
Grand-total			1,225	4,506.87	70.05		

Source: Guide to place names in the Trust Territory of the Pacific Islands TTPI.

FIGURE - 1
RELATIVE SIZES OF ATOLLS AND ISLANDS
SQUARE MILES

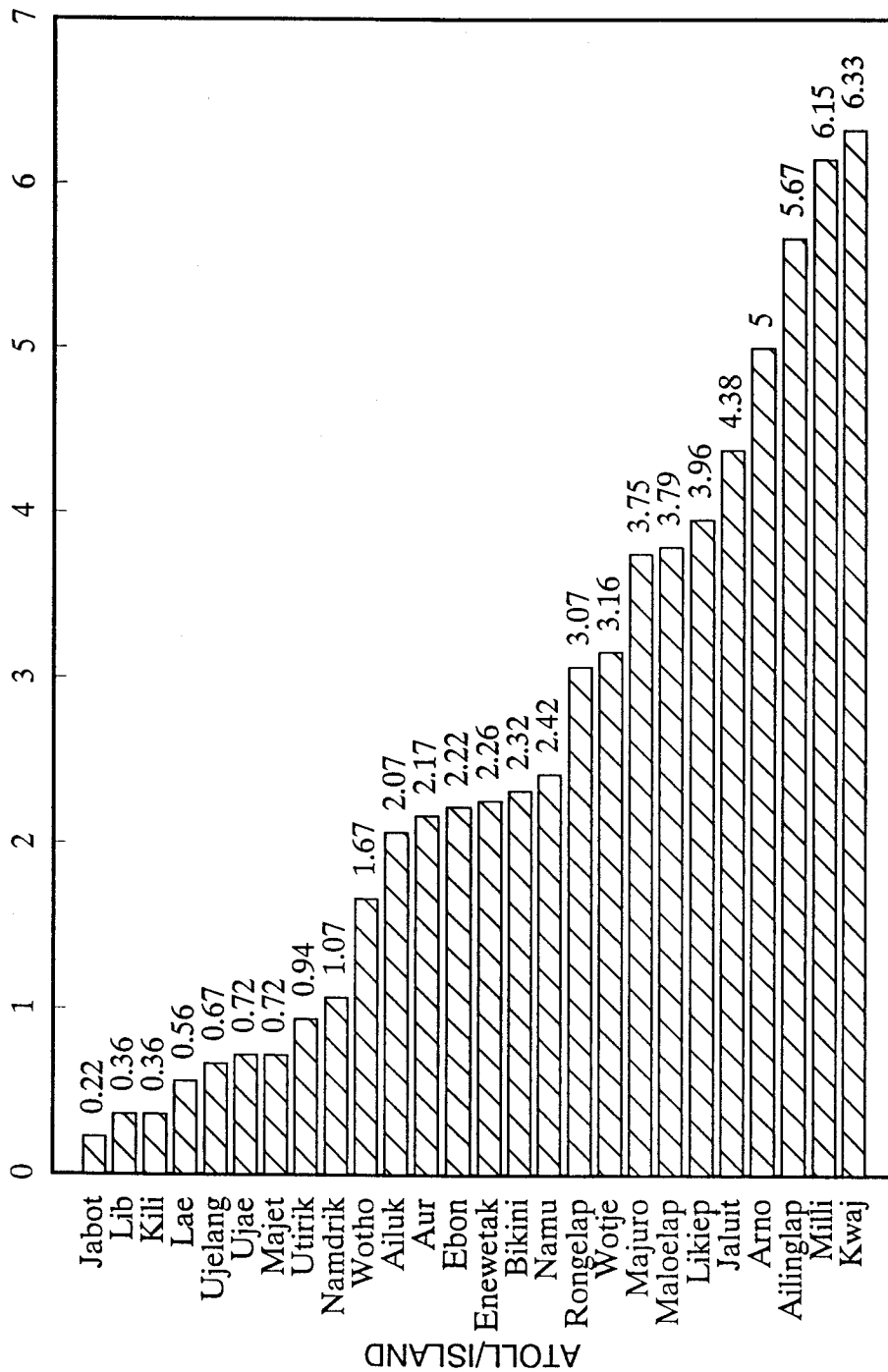


TABLE: 1.2
DISTANCE BETWEEN ATOLLS/ISLANDS (NAUTICAL MILES)

ATOLLS/ISLANDS	A	A	A	A	A	A	E	E	E	J	J	K	K	L	L	L	M	M	M	N	N	N	R	T	U	U	U	U	W	W	B
AILINGLAPLAP	-	187	160	180	150	165	110	30	95	160	105	180	100	152	150	210	208	103	75	260	150	205	485	240	240	150	310	310			
AILUK	187	-	125	220	145	345	160	165	257	95	282	235	190	45	205	55	275	240	172	190	135	380	540	80	235	45	273				
AIROK MALOELAP	160	125	-	108	20	280	200	133	180	30	215	290	220	140	90	110	150	250	175	250	10	220	615	185	310	80	380				
ARNO	180	220	108	-	80	220	200	170	135	108	170	345	260	230	30	200	60	225	215	385	85	375	670	275	385	175	420				
AUR	150	145	20	80	-	255	200	128	160	50	190	290	220	150	70	135	133	235	175	315	10	330	620	200	325	100	395				
EBON	165	345	280	220	255	-	255	188	95	280	65	295	230	315	220	360	195	70	200	415	255	320	560	400	365	300	462				
EBEYE KWAJALEIN	110	160	200	260	200	255	-	103	200	200	200	90	35	120	235	200	300	185	40	150	200	120	470	250	130	150	217				
JABWOT	30	165	133	170	128	188	103	-	118	128	124	182	104	125	132	188	186	140	68	242	125	220	498	250	235	120	307				
JALUIT	95	275	180	135	160	95	200	118	-	180	35	265	190	235	130	265	125	90	145	360	160	300	570	315	325	210	415				
KAVEN MALOELAP	160	95	30	108	50	280	200	128	180	-	215	290	220	105	115	85	150	250	170	250	40	220	615	150	310	50	358				
KILI	105	282	215	170	190	65	200	124	35	215	-	260	185	250	160	295	160	60	150	360	190	285	550	335	325	230	416				
LAE	180	235	290	345	290	295	90	182	265	290	260	-	80	180	320	285	380	200	110	140	290	30	320	250	80	225	116				
LIB	100	190	220	260	220	230	35	104	190	220	185	80	-	140	245	240	300	165	35	170	220	105	395	225	140	170	225				
LIKIEP	152	45	140	230	150	315	120	125	235	105	250	180	140	-	205	95	275	260	130	160	140	215	485	95	185	60	245				
MAJURO	150	205	90	30	70	220	235	132	130	115	160	320	245	206	-	200	85	215	210	360	80	350	635	265	365	160	439				
MEJIT	210	55	110	200	130	360	200	188	265	85	295	285	240	95	200	-	255	320	210	240	120	320	600	85	290	65	329				
MILI	208	275	150	60	133	195	300	186	125	150	160	380	300	275	80	255	-	220	250	425	133	410	700	330	420	230	496				
NAMORIK	103	240	250	225	235	79	185	140	90	250	60	220	165	260	215	320	220	-	140	350	235	250	490	350	300	260	390				
NAMU	75	172	175	215	175	200	40	68	145	170	150	110	35	130	210	210	250	140	-	190	175	140	425	220	170	145	250				
RONGELAP	260	190	250	385	315	415	150	242	360	250	360	140	170	160	360	240	425	350	190	-	315	150	360	190	80	220	95				
TABALAU	150	135	10	80	10	255	200	125	160	40	190	290	220	140	80	120	133	236	175	315	-	330	620	190	325	-	390				
UJAE	205	360	220	375	330	320	120	220	300	220	285	30	105	215	350	320	410	350	140	150	330	-	290	280	80	260	142				
UJELANG	485	540	615	670	620	650	410	498	570	615	550	320	395	485	635	600	700	490	425	320	620	290	-	540	300	550	290				
UTRIK	240	60	185	275	200	400	250	250	315	150	335	255	225	90	265	85	330	350	220	180	190	280	540	-	235	110	255				
WOTHO	240	235	310	385	325	365	130	235	325	310	325	80	140	185	365	290	420	300	170	80	325	80	300	235	-	245	88				
WOTJE	150	45	80	175	100	300	150	120	210	50	230	225	170	60	160	65	230	260	145	220	90	260	550	110	245	-	307				
BIKINI	310	273	380	450	395	462	217	307	315	358	416	165	225	245	439	329	496	390	250	95	390	142	290	255	88	307	-				

Source: Ministry of Transportation and Communications.

TABLE 1.3 - MONTHLY RAINFALL, MAJURO, 1959 - 1991 (INCHES)

YEAR	Jan	Feb	Mar	Apr	May	Jun	Jul	Aug	Sept	Oct	Nov	Dec	Annual
1959	1.07	9.47	8.72	12.69	6.35	14.17	11.00	5.33	16.36	11.49	19.92	14.00	130.57
1960	9.17	3.60	11.17	23.41	14.27	13.22	14.10	14.59	16.93	9.71	16.32	6.54	153.03
1961	21.97	6.50	4.24	8.50	8.34	13.90	5.34	11.31	11.14	11.50	12.04	16.91	131.69
1962	17.55	5.15	11.48	5.95	12.01	7.54	11.02	8.91	21.03	16.36	22.69	11.71	151.40
1963	17.46	9.57	12.43	6.21	11.31	11.96	11.69	10.76	6.83	13.13	11.60	8.57	131.52
1964	1.40	6.99	7.23	11.16	22.02	11.16	18.69	15.58	21.11	22.79	16.85	7.42	162.40
1965	9.85	5.32	1.98	4.69	7.93	11.45	14.85	6.92	15.46	14.71	12.12	9.55	114.83
1966	3.79	4.42	5.80	16.03	8.64	9.40	14.94	6.52	13.95	13.53	12.24	19.44	128.70
1967	11.88	9.72	12.46	7.64	4.93	10.98	13.87	7.99	13.78	15.16	11.16	6.48	126.05
1968	5.38	3.49	11.12	8.86	9.33	16.07	11.39	11.50	9.77	12.06	11.97	24.80	135.74
1969	8.22	2.35	16.17	17.21	8.78	13.01	16.65	10.24	15.65	7.11	11.68	7.21	134.28
1970	5.62	0.40	1.73	2.87	9.23	10.66	7.73	11.24	11.75	12.64	6.60	8.40	88.87
1971	8.21	5.74	9.80	31.10	19.86	13.42	15.49	14.92	7.93	18.06	9.46	8.40	162.39
1972	9.58	7.11	15.45	9.17	14.96	14.88	14.76	10.84	18.96	14.06	4.53	23.36	157.66
1973	0.78	1.84	11.05	14.59	14.33	12.23	7.29	13.86	12.78	13.79	14.21	7.24	123.99
1974	11.09	8.07	7.18	15.67	12.84	13.66	12.48	13.69	10.44	19.90	9.29	14.49	148.80
1975	5.20	3.21	7.77	12.76	10.58	17.63	14.23	16.35	16.51	18.29	15.28	13.95	151.76
1976	8.57	9.42	15.68	19.41	15.28	9.43	16.78	8.36	17.66	8.95	12.70	2.77	145.01
1977	2.39	0.77	2.60	10.62	17.21	8.37	10.88	11.15	9.72	17.59	11.85	18.88	122.03
1978	3.60	5.25	3.39	12.65	13.90	10.70	16.25	8.86	9.73	20.56	23.56	14.35	142.80
1979	6.78	2.77	7.14	11.75	7.91	13.23	6.67	13.03	6.54	15.04	11.33	7.10	109.29
1980	8.11	9.70	5.05	7.03	11.34	6.73	8.48	13.89	12.85	9.25	5.35	10.56	108.34
1981	0.90	4.34	17.40	10.20	9.04	5.43	16.53	12.24	6.71	7.28	14.61	14.47	119.15
1982	12.63	9.72	13.29	4.68	11.46	16.98	14.66	11.72	18.94	8.17	19.08	3.17	144.50
1983	0.83	0.98	0.66	1.97	1.49	14.45	12.58	6.05	11.25	13.47	9.84	12.74	86.31
1984	16.12	16.83	1.29	3.87	4.18	5.40	9.35	9.20	6.42	14.77	13.31	14.95	115.69
1985	8.70	16.56	4.59	15.38	9.67	14.67	13.18	16.77	8.03	18.06	12.81	11.30	149.72
1986	10.51	3.91	14.75	12.23	14.94	15.89	12.09	19.98	10.52	7.32	9.37	17.10	148.61
1987	6.24	4.01	4.90	2.14	9.22	14.76	21.17	8.36	11.09	11.29	15.45	7.48	116.11
1988	14.65	6.76	6.76	5.92	6.85	9.11	14.36	10.59	13.86	17.87	7.18	13.65	127.56
1989	7.75	8.30	4.76	8.54	11.18	7.20	17.44	10.34	14.55	16.41	19.84	8.52	134.83
1990	7.01	4.21	10.36	9.43	16.56	7.28	9.09	14.39	7.57	6.17	15.57	10.36	118.00
1991	9.87	11.68	20.58	8.55	0.92	4.56	3.76	0.57	6.64	4.80	1.88	8.04	81.85
Ave.	8.28	6.13	8.44	10.88	10.94	12.02	12.95	11.36	12.79	13.80	12.81	11.90	132.29

Source: Majuro Weather Station.

FIGURE - 2

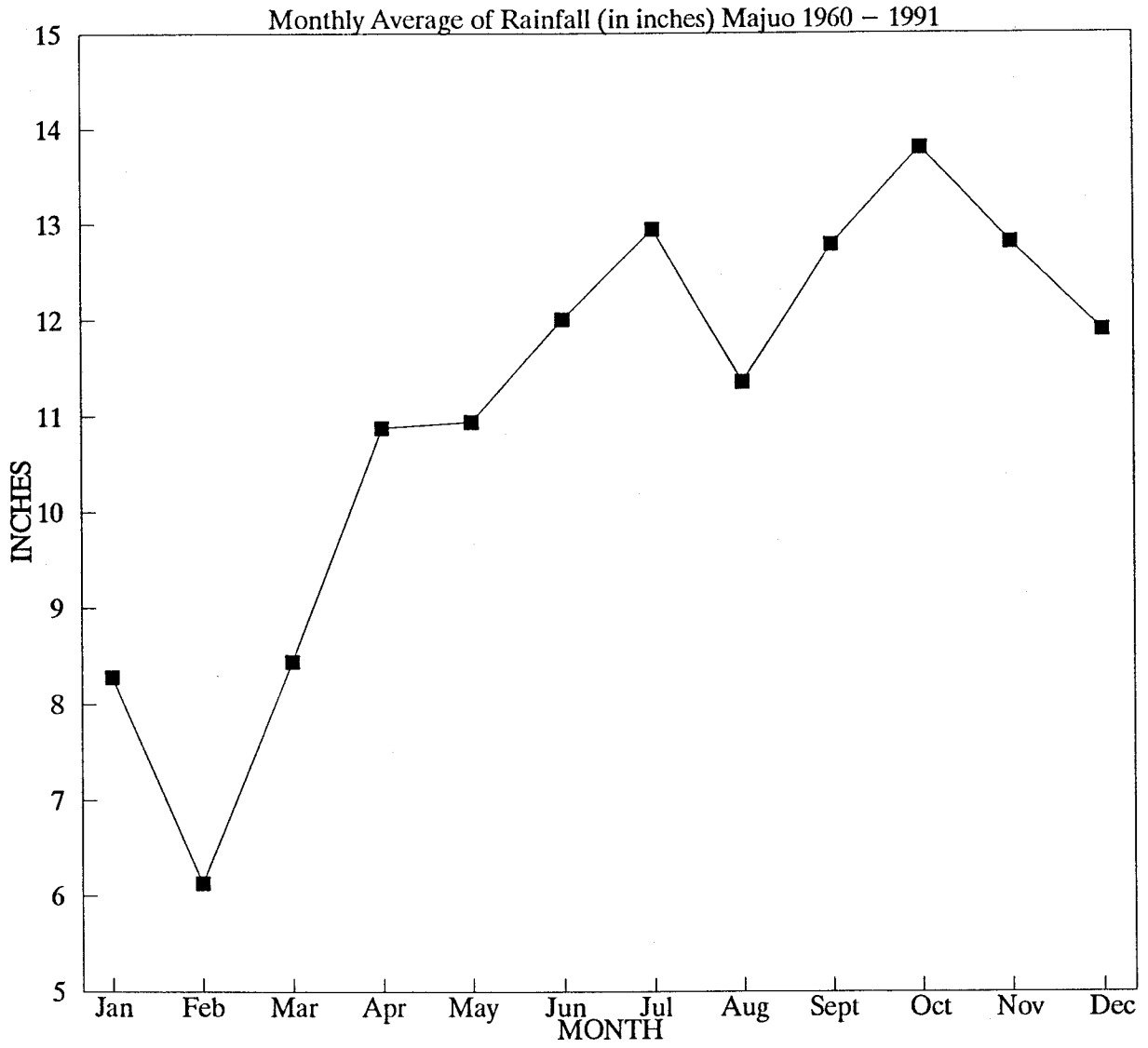


TABLE 1.4
MONTHLY AVERAGE TEMPERATURE IN DEGREES FAHRENHEIT, MAJURO, 1959 - 1991.

YEAR	Jan	Feb	Mar	Apr	May	Jun	Jul	Aug	Sept	Oct	Nov	Dec	Annual Ave.
1959	81.2	80.9	81.5	80.5	82.0	81.1	81.3	82.2	81.4	81.4	81.1	80.6	81.3
1960	81.0	81.6	81.5	80.2	80.6	80.6	81.1	81.2	81.7	82.3	81.8	81.7	81.3
1961	81.3	81.8	82.6	81.7	81.5	81.2	81.5	81.3	81.1	81.9	81.4	80.9	81.5
1962	80.9	81.6	80.7	81.7	82.2	81.3	81.2	81.8	81.0	81.5	80.7	81.5	81.3
1963	80.5	80.5	80.7	82.1	82.3	81.8	81.7	82.2	82.8	81.7	81.8	81.3	81.6
1964	81.8	81.6	81.3	81.4	81.1	80.7	80.8	80.8	80.5	80.7	80.7	80.8	81.0
1965	80.2	80.5	81.5	81.3	81.0	81.2	80.7	82.1	81.3	81.4	81.0	80.8	81.1
1966	81.0	81.3	81.3	80.7	81.7	81.7	81.9	82.5	81.8	81.9	81.2	80.9	81.5
1967	81.0	80.8	80.2	81.2	82.0	81.3	81.4	82.2	82.0	81.4	81.2	81.5	81.4
1968	81.1	81.4	80.3	80.6	80.8	81.1	80.9	81.4	81.8	81.1	81.1	80.6	81.0
1969	80.1	81.1	81.0	80.7	81.5	81.2	80.5	81.6	81.5	82.4	82.0	81.3	81.2
1970	81.2	82.0	82.0	82.1	81.5	80.7	81.1	80.8	81.1	80.6	81.2	80.6	81.3
1971	80.6	80.9	80.9	79.5	80.0	80.2	80.5	80.1	80.8	80.5	81.1	80.5	80.5
1972	80.2	80.9	80.8	80.8	81.2	81.5	80.9	81.2	81.3	80.9	81.7	80.8	81.0
1973	80.9	81.8	81.6	81.3	80.6	80.8	80.9	80.8	80.2	80.5	80.7	81.1	80.9
1974	79.9	80.8	80.8	80.5	80.8	80.6	80.7	81.0	80.9	81.0	80.9	80.3	80.7
1975	80.4	81.0	80.7	80.2	80.5	79.7	79.7	79.9	80.0	78.8	79.4	79.5	80.0
1976	79.4	79.4	79.6	79.5	80.0	80.0	80.0	80.7	80.4	81.4	80.2	80.1	80.1
1977	80.3	81.3	81.5	80.5	80.1	81.2	80.9	81.2	82.4	81.1	81.2	81.1	81.1
1978	81.2	81.1	81.5	80.9	80.5	80.9	80.4	81.5	81.6	81.2	80.6	80.3	81.0
1979	81.2	81.0	81.6	79.7	80.9	81.5	81.5	80.9	82.0	82.1	81.8	81.7	81.3
1980	81.4	81.3	81.3	81.6	81.5	81.9	81.5	81.5	81.7	82.2	81.9	81.0	81.6
1981	81.4	81.5	81.0	80.9	81.4	82.0	80.8	81.4	82.0	82.0	81.0	80.6	81.3
1982	80.5	80.7	80.5	81.8	81.3	81.3	81.1	81.3	81.4	82.0	81.4	80.2	81.1
1983	80.1	80.5	81.4	82.2	83.0	81.4	81.3	82.2	81.8	80.9	81.0	80.3	81.3
1984	80.6	80.6	80.0	81.9	81.5	80.3	80.6	81.8	81.2	80.8	80.6	80.9	81.0
1985	80.8	80.3	80.7	79.8	81.1	80.4	80.7	80.4	81.5	81.4	81.5	80.9	80.8
1986	81.1	81.9	80.3	81.1	81.7	81.1	81.7	81.8	81.8	82.1	81.9	80.5	81.4
1987	80.6	80.7	81.0	81.8	81.5	81.1	80.9	82.1	81.8	82.2	81.8	81.2	81.4
1988	80.9	81.9	81.8	82.1	81.8	81.3	81.1	81.4	80.6	80.3	81.2	80.4	81.2
1989	80.5	80.3	80.6	80.5	80.8	81.0	80.5	80.9	81.1	81.6	81.4	82.0	80.9
1990	81.2	81.6	82.0	81.9	81.1	81.6	81.4	81.7	81.8	81.7	81.8	80.4	81.5
1991	80.1	81.4	79.6	80.3	81.1	80.9	81.3	81.4	81.1	81.8	81.0	81.0	80.9
Mean.....	80.8	81.1	81.1	81.0	81.3	81.0	81.0	81.4	81.4	81.3	81.2	80.8	81.1
Maximum (Mon.Ave)	81.8	82.0	82.6	82.2	83.0	82.0	81.9	82.5	82.8	82.4	82.0	81.7	81.6
Minimum (Mon.Ave)	79.4	79.4	79.6	79.5	80.0	79.7	79.7	79.9	80.0	78.8	79.4	79.5	80.0

Source: Majuro Weather Station.

FIGURE - 3

MONTHLY AVERAGE OF TEMPERATURE IN DEGREES
FARENHEIT, MAJURO 1960 - 1991

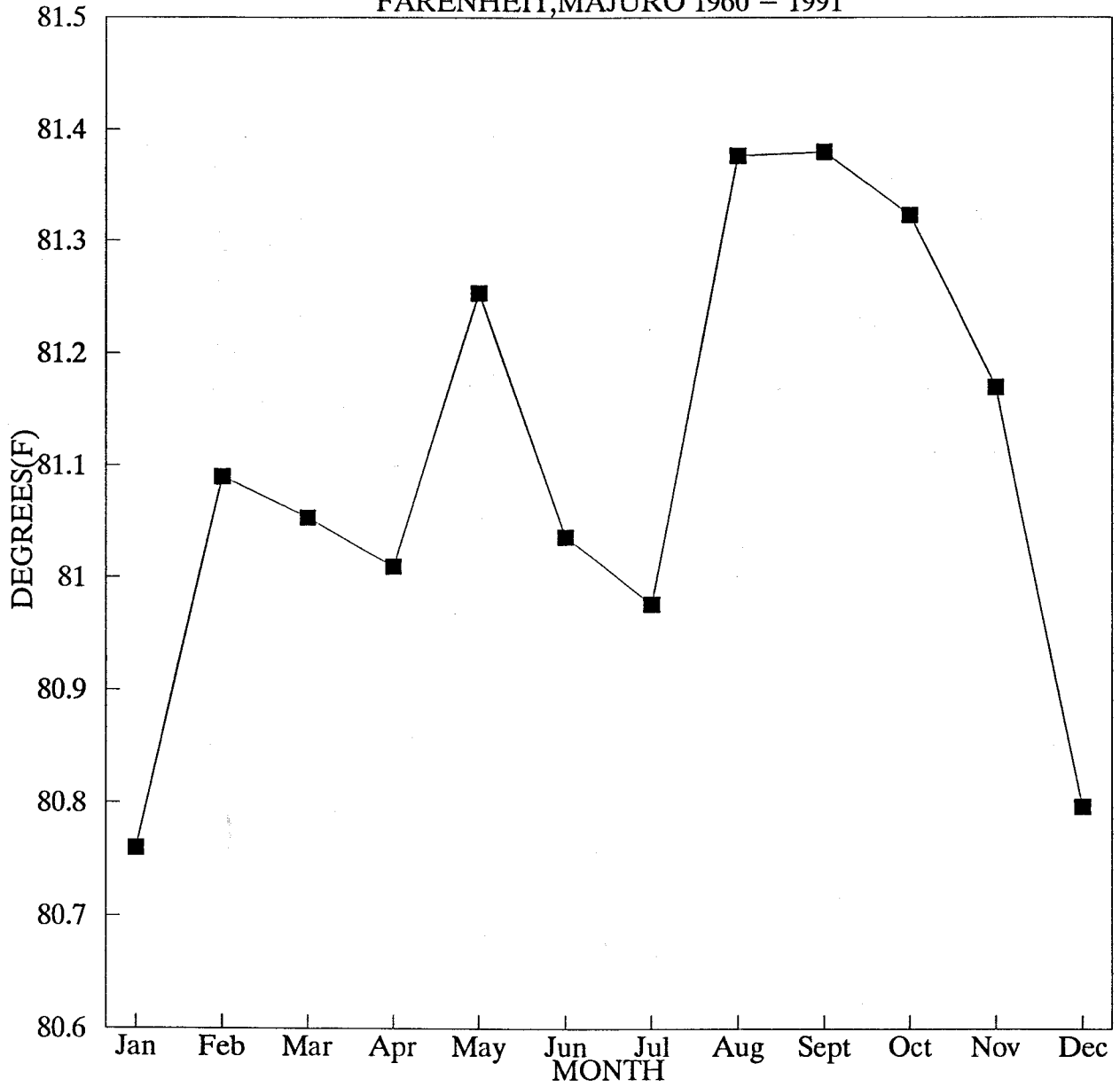


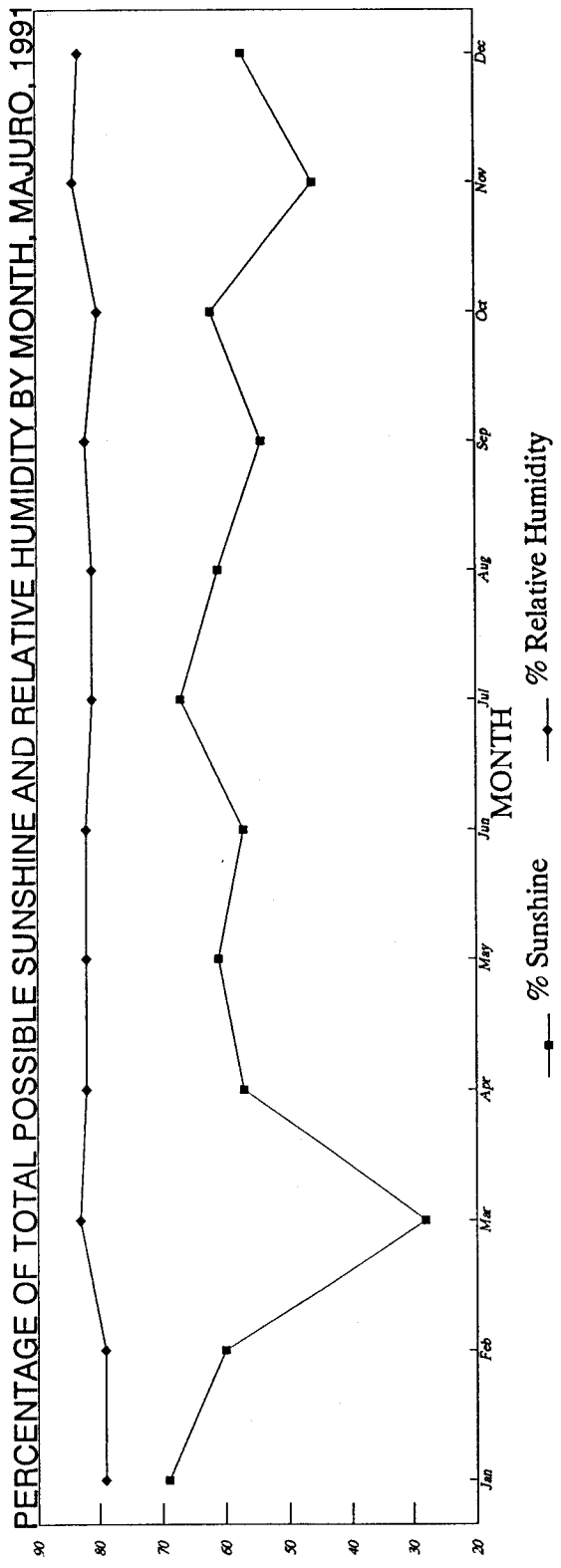
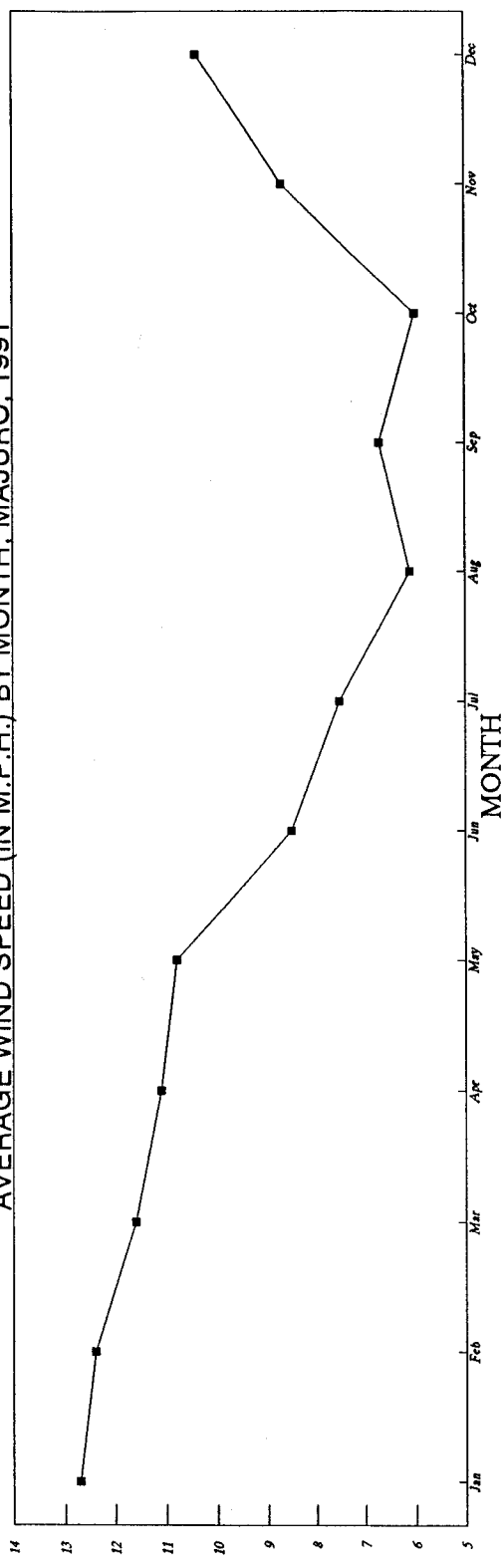
TABLE: 1.5
 AVERAGE WIND SPEED (IN M.P.H.), PREVAILING DIRECTION OF WIND, PERCENTAGE OF TOTAL POSSIBLE SUNSHINE AND
 RELATIVE HUMIDITY BY MONTH, MAJURO, 1989, 1990 AND 1991

Month	1989				1990				1991			
	Average Speed	Prevailing Direction	Percentage Sunshine	Relative Humidity	Average Speed	Prevailing Direction	Percentage Sunshine	Relative Humidity	Average Speed	Prevailing Direction	Percentage Sunshine	Relative Humidity
January	13.3	7	66	81	15.1	58	65	76	12.7	60	69	79
February	11.7	7	63	81	10.3	57	94	79	12.4	60	60	79
March	11.5	7	67	79	12.8	63	91	80	11.6	70	28	83
April	12.4	7	62	82	12.5	63	79	79	11.1	70	57	82
May	12.9	7	63	84	12	66	51	83	10.8	70	61	82
June	10.8	7	61	82	10	68	73	81	8.5	70	57	82
July	9.3	7	52	83	8.3	70	55	80	7.5	70	67	81
August	7.6	8	73	82	7.4	66	52	80	6.1	80	61	81
September	6.3	7	73	81	6.1	66	52	80	6.7	80	54	82
October	6.8	8	52	81	5.9	73	71	80	6	34	62	80
November	7.7	9	51	81	6.1	170	59	80	8.7	70	46	84
December	11.9	6	73	79	9.6	68	65	81	10.4	60	57	83

Note : Directions of winds are those from which the wind blows, indicated in tens of degrees from true North: i.e., 9 for East, 18 for South, 27 for West.

Source : Majuro Weather Station.

FIGURE -4
 AVERAGE WIND SPEED (IN M.P.H.) BY MONTH, MAJURO, 1991



SECTION 2

2. POPULATION

2.1. DEMOGRAPHIC CHANGE

2.2. RESIDENT POPULATION

2.3. INTERNAL MIGRATION

2.4. REGISTERED BIRTHS AND DEATHS

2.5. ESTIMATED FERTILITY AND MORTALITY

2.6. PROJECTIONS OF POPULATIONS

2. Population

The total population counted in the week following census night, November 13, 1988, in the Marshall Islands was 43,380. This meant a sharp increase from eight years before, when 30,873 people were counted. This would mean an intercensal average annual growth rate of 4.17%. However, since the two censuses are incompatible in their counting methods (1988, 'De Facto' and 1980 'De Jure') as well as suspected inconsistencies in the 1980 Census, the annual growth rate used by the Office of Planning and Statistics is the one calculated between 1973 and 1988, 3.8% per annum. Almost half of the population lives in the capital, Majuro Atoll, while another 19% lives on Ebeye Island in Kwajalein Atoll. The mid year population estimate for 1991 is 49,969 people. The projected population for the year 2000 is 68,415 people.

Total fertility for 1989 was estimated as being 7.21 and from the age specific fertility rates an estimated 2,163 births occurred during 1989 while 1,429 births were registered (66%). Life expectancy at birth in 1989 was estimated as being 63.0 and 60.0 for females and males respectively. From the life tables 391 deaths were predicted, while 151 were registered (39%).

Mobility in the Marshall Islands is high. In 1988, 20,512 people out of 43,380 lived on another atoll before they moved to the atoll where they were enumerated. Collection of data at this moment does not provide for the monitoring of international migration.

TABLE : 2.1
RESIDENT POPULATION OF THE REPUBLIC OF THE MARSHALL ISLANDS
BY SEX. SELECTED YEARS 1920 - 1992.

YEAR		MALE	FEMALE	TOTAL
1920	Census Year	5,196	4,604	9,800
1925	Census Year	5,030	4,614	9,644
1930	Census Year	5,505	4,907	10,412
1935	Census Year	5,480	4,966	10,446
1954		6,808	6,412	13,220
1958	Census Year	7,175	6,753	13,928
1960		7,607	7,300	14,907
1965		9,042	9,020	18,062
1967	Census Year	9,658	9,267	18,925
1970		11,310	10,770	22,080
1973	Census Year	12,335	11,800	24,135
1977	Survey	13,830	13,270	27,100
1980	Census Year	15,851	15,022	30,873
1988	Census Year	22,181	21,199	43,380
1989	Projections	22,698	21,709	44,407
1990	Projections	23,598	22,590	46,188
1991	Projections	24,532	23,509	48,041
1992	Projections	25,508	24,461	49,969

Notes:

1) The figures for 1920, 1925, 1930, and 1935 are related to counts as of October 1st. and were collected and tabulated by Japanese Administration.

2) Figures for 1967, 1973, 1980 and 1988 are actual census counts: April 1, 1967 (collected by Peace Corps); September 18, 1973 (TTPI Census), September 15, 1980 (USBC Census) and November 13, 1988 which was conducted by Office of Planning and Statistics, RMI. For other years prior to 1970, the numbers are estimated based on partial census counts, summaries of administrative records or a combination of these methods. Total population from 1989 to 1992 refers to mid year.

3) Figures do not include residents of United States Army Kwajalein Atoll.

Sources: - Quarterly Bulletin of Statistics, TTPI, 1980.
 Vol. III No 2.

- 1980 Census of Population, TTPI, U.S. Bureau of Census.

- 1988 Census of Population, O.P.S., Majuro.