

**AGE
AND
SEX**

Chapter 2. Age And Sex Distribution

The age and sex composition of a population is the prime focus to planning for community development and for determining economic, social and population growth. Age is the crucial factor for determining various potential populations in a community such as for schools, manpower, voting, reproduction, etc. Sex is important in understanding social perspective and trends in a community and a population's potential economic activity.

The data on sex were derived from answers to question 3. At the time of field review, most cases in which sex was not reported were resolved by determining the appropriate entry from the person's given name and household relationship. When sex remained blank, it was allocated according to the relationship to the householder and the age and marital status of the person.

The data on age were derived from answers to question 5. Only the information in items 5b and 5c (on month and year of birth) was read into the computer. Answers to question 5a (on age at last birthday) were used during field review to fill any blanks in question 5c. The age classification was based on the age of the person in completed years as of April 1, 1980. The data on age represented the difference between date of birth and April 1, 1980.

In Chapter 1 we discussed historical statistics for the Northern Mariana Islands, including age and sex distributions, starting with information for Rota in 1897. In this, and in subsequent chapters, we will be discussing recent statistics for the CNMI, with a view for the potential of using the data for planning purposes.

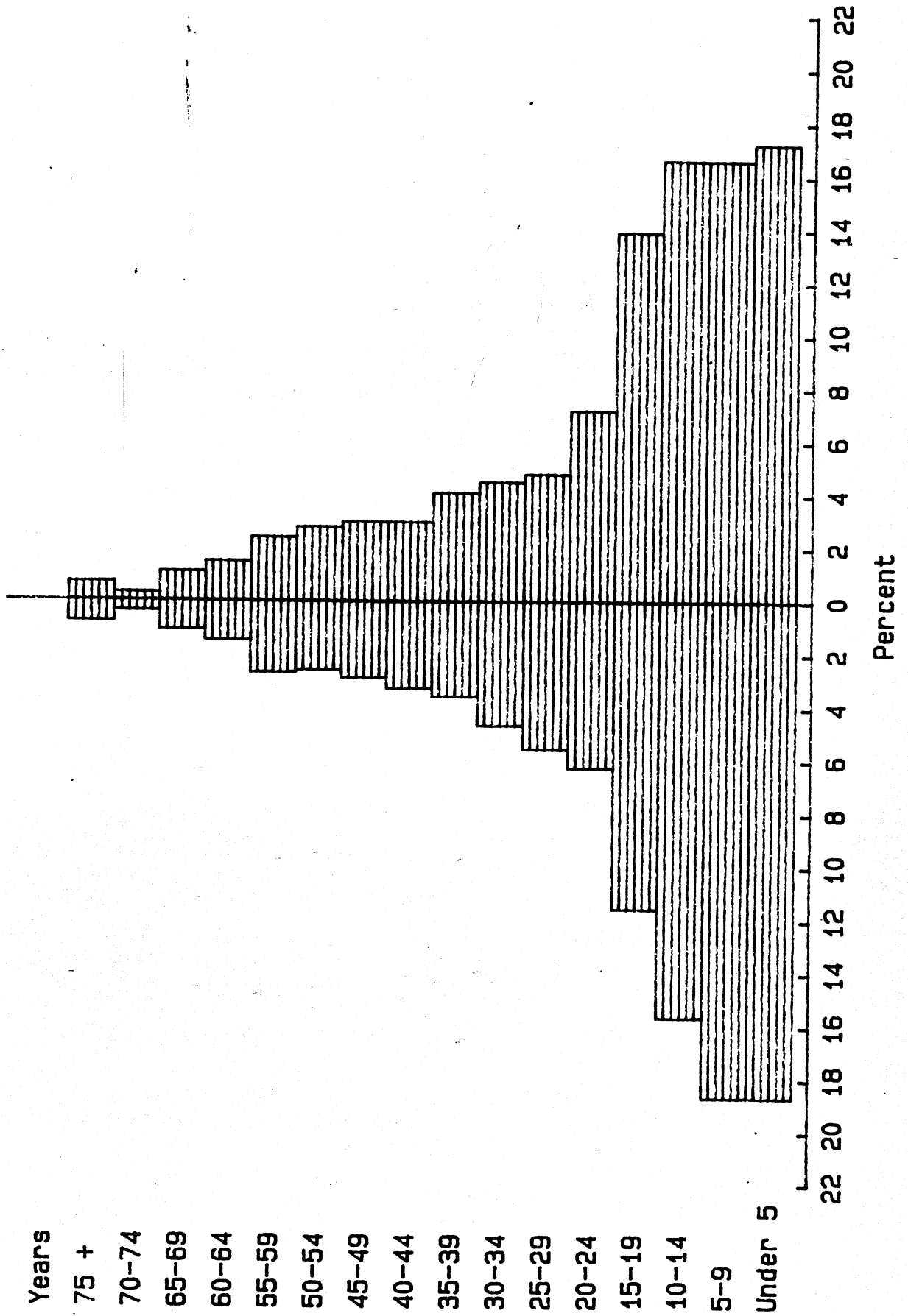
The population of the Commonwealth has been aging in recent years, partly as a result of reduced fertility (which will be described in Chapter 5), partly as a result of even more drastic decreases in mortality (seen in the much lower mortality rates during the American Administration than during the Japanese Administration), and partly because of the unusual migration situation, with large numbers of relatively "middle-aged" migrants (discussed in more detail in Chapter 7).

The median age of the CNMI population in 1980 was 19.6 years (Table 2.1). The median age is that age which is the exact mid-point of all ages, that is, half the people were older and half were younger. The median had increased by almost 5 years during the period between 1967 and 1980, from 15.0 in 1967 to 16.6 in 1973 to 19.6 in 1980. (The data for 1967 are slightly skewed because non-Natives were excluded from the tabulation by age and sex, so the real median age for all persons was not quite this low.)

The very low median ages for 1967 and 1973 have implications for the need for increased educational and health facilities for the many young persons. Those needs may now be changing as the population is aging because of the lower birth rates in the 1970s.

FIGURE 2.1

Age and Sex Distribution: 1967



The median age for females is normally higher than for males, because females tend to live longer. This was not the case for the Northern Mariana Islands in recent years, however. In 1967 the median age for males was only slightly lower than for females - 14.1 years old for the males and 14.9 for the females. In 1973, the males were only a year younger than the females, with the median for males being 15.3 years and 16.6 for females. However, in 1980 the age difference shifted, as the median for males went to 19.6 years, compared to 18.3 years for females.

It is important to note that the upward trend in the aging of the Marianas is occurring for both males and females, but is seen even more in the males than in the females. When we look at the data on birthplace and on ethnicity in those chapters we will be seeing that the increase is due to migration, particularly of Filipinos and U.S. mainlanders.

Table 2.1. Population by Age and Sex: 1967 to 1980

Age Group	Total			Males			Females		
	1980	1973	1967	1980	1973	1967	1980	1973	1967
Total....	16780	14333	10155	8817	7484	5084	7963	6849	5071
0 to 4....	2464	2410	1822	1274	1238	950	1190	1172	872
5 to 9....	2148	2194	1793	1040	1127	952	1108	1067	841
10 to 14....	2193	1920	1638	1119	997	798	1074	923	840
15 to 19....	1703	1635	1295	842	775	592	861	860	703
20 to 24....	1512	1257	685	709	590	319	803	667	366
25 to 29....	1463	986	528	753	539	283	710	447	245
30 to 34....	1303	758	465	743	454	238	560	304	227
35 to 39....	864	710	394	520	412	185	344	298	209
40 to 44....	824	598	321	520	357	167	304	241	154
45 to 49....	660	449	304	404	276	150	256	173	154
50 to 54....	496	419	273	315	230	129	181	189	144
55 to 59....	388	330	260	225	158	138	163	172	122
60 to 64....	267	268	151	125	150	74	142	118	77
65 to 69....	228	169	110	119	81	54	109	88	56
70 to 74....	139	109	43	65	45	18	74	64	25
75 and over.	128	101	53	44	44	23	84	57	30
Age N.S.....	0	20	20		11	14		9	6
Median.....	19.6	15.7	14.5	20.9	15.3	14.1	18.3	16.6	14.9

Source: PC80-1-B57A, Table 15, TTPI 1973 Census, Table 4a, and TTPI 1967 Census, Table 1

The aging of the Northern Marianas population is also seen in the distribution of the population by age group. Although 17 percent of the

native population was under 5 in 1967, only 15 percent of the population was less than 5 in 1980 (and most of the decrease was between 1973 and 1980) (Table 2.2). Males and females experienced similar decreases for this youngest age group.

There were similar decreases for the other young ages, with those 5 to 9 decreasing from 17 percent to 13 percent of the population, and those 10 to 14 years old decreasing from 16 to 13 percent. Persons 15 to 19 experienced most of their decrease between 1967 and 1973, probably because students of this age group started leaving the islands for schooling, a trend which continued, at least into the 1980s. With the emergence of the College of the Northern Mariana Islands, fewer students may be leaving the islands for schooling, and this age group may be a larger part of the total population.

The percentage of older persons, those 55 years and over, also did not change very much during the 13 years, increasing from 6 to 7 percent during the period. The increase was the same for both males and females.

Table 2.2. Population by Age and Sex: 1967 to 1980

Age Group	Total			Males			Females		
	1980	1973	1967	1980	1973	1967	1980	1973	1967
Total....	100.0	100.0	100.0	100.0	100.0	100.0	100.0	100.0	100.0
0 to 4....	14.7	16.8	18.0	14.4	16.6	18.7	14.9	17.1	17.2
5 to 9....	12.8	15.3	17.7	11.8	15.1	18.8	13.9	15.6	16.6
10 to 14....	13.1	13.4	16.2	12.7	13.3	15.7	13.5	13.5	16.6
15 to 19....	10.1	11.4	12.8	9.5	10.4	11.7	10.8	12.6	13.9
20 to 24....	9.0	8.8	6.8	8.0	7.9	6.3	10.1	9.8	7.2
25 to 29....	8.7	6.9	5.2	8.5	7.2	5.6	8.9	6.5	4.8
30 to 34....	7.8	5.3	4.6	8.4	6.1	4.7	7.0	4.4	4.5
35 to 39....	5.1	5.0	3.9	5.9	5.5	3.6	4.3	4.4	4.1
40 to 44....	4.9	4.2	3.2	5.9	4.8	3.3	3.8	3.5	3.0
45 to 49....	3.9	3.1	3.0	4.6	3.7	3.0	3.2	2.5	3.0
50 to 54....	3.0	2.9	2.7	3.6	3.1	2.5	2.3	2.8	2.8
55 to 59....	2.3	2.3	2.6	2.6	2.1	2.7	2.0	2.5	2.4
60 to 64....	1.6	1.9	1.5	1.4	2.0	1.5	1.8	1.7	1.5
65 to 69....	1.4	1.2	1.1	1.3	1.1	1.1	1.4	1.3	1.1
70 to 74....	.8	.8	.4	.7	.6	.4	.9	.9	.5
75 and over.	.8	.7	.5	.5	.6	.5	1.1	.8	.6

Source: PC80-1-B57A, Table 15, TTPI 1973 Census, Table 4a, and TTPI 1967 Census, Table 1

It was the persons in the working years, from 20 to 54 who increased the most in relationship to the other groups. Although only 28 percent of the

Age and Sex Distribution: 1973

FIGURE 2.2

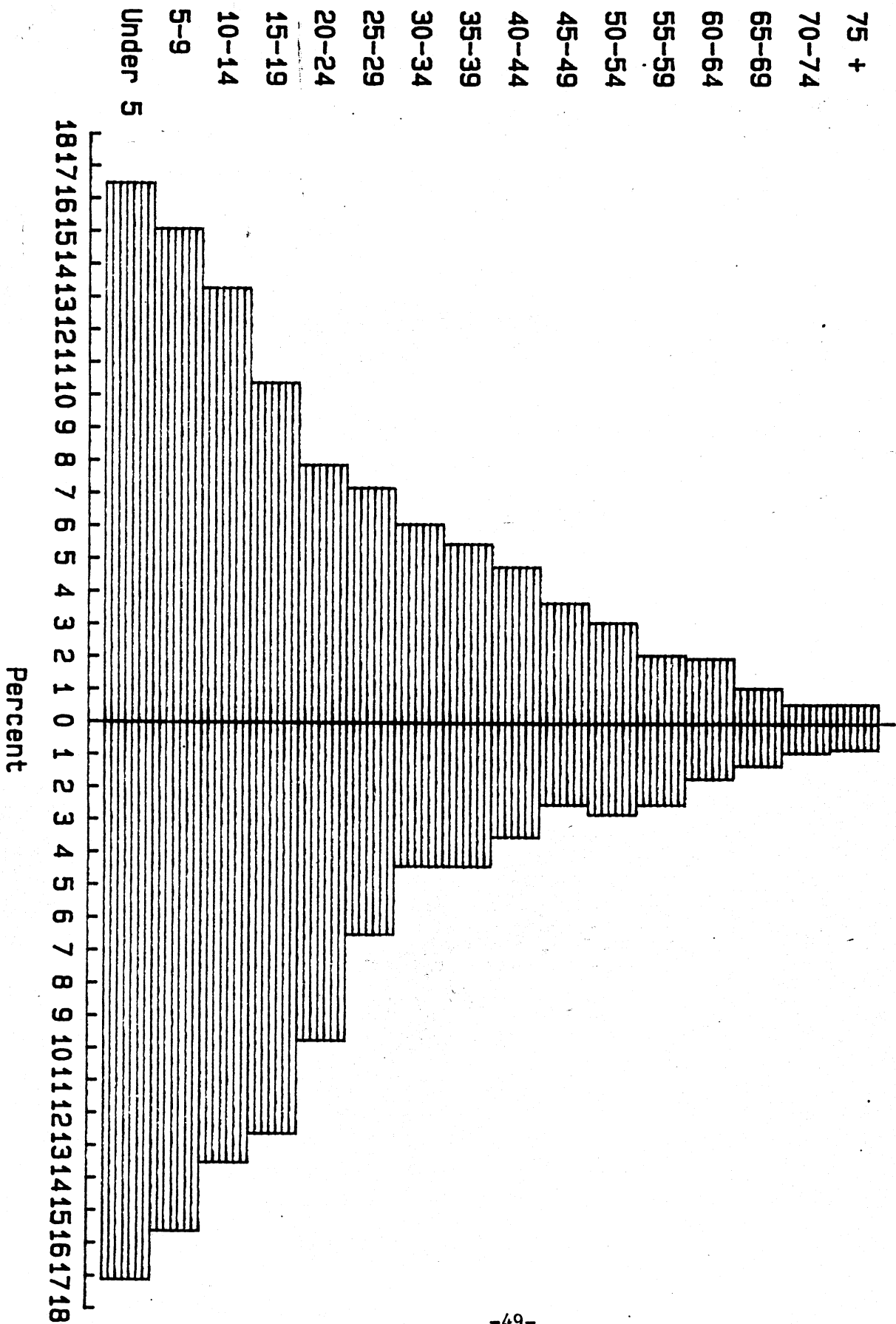
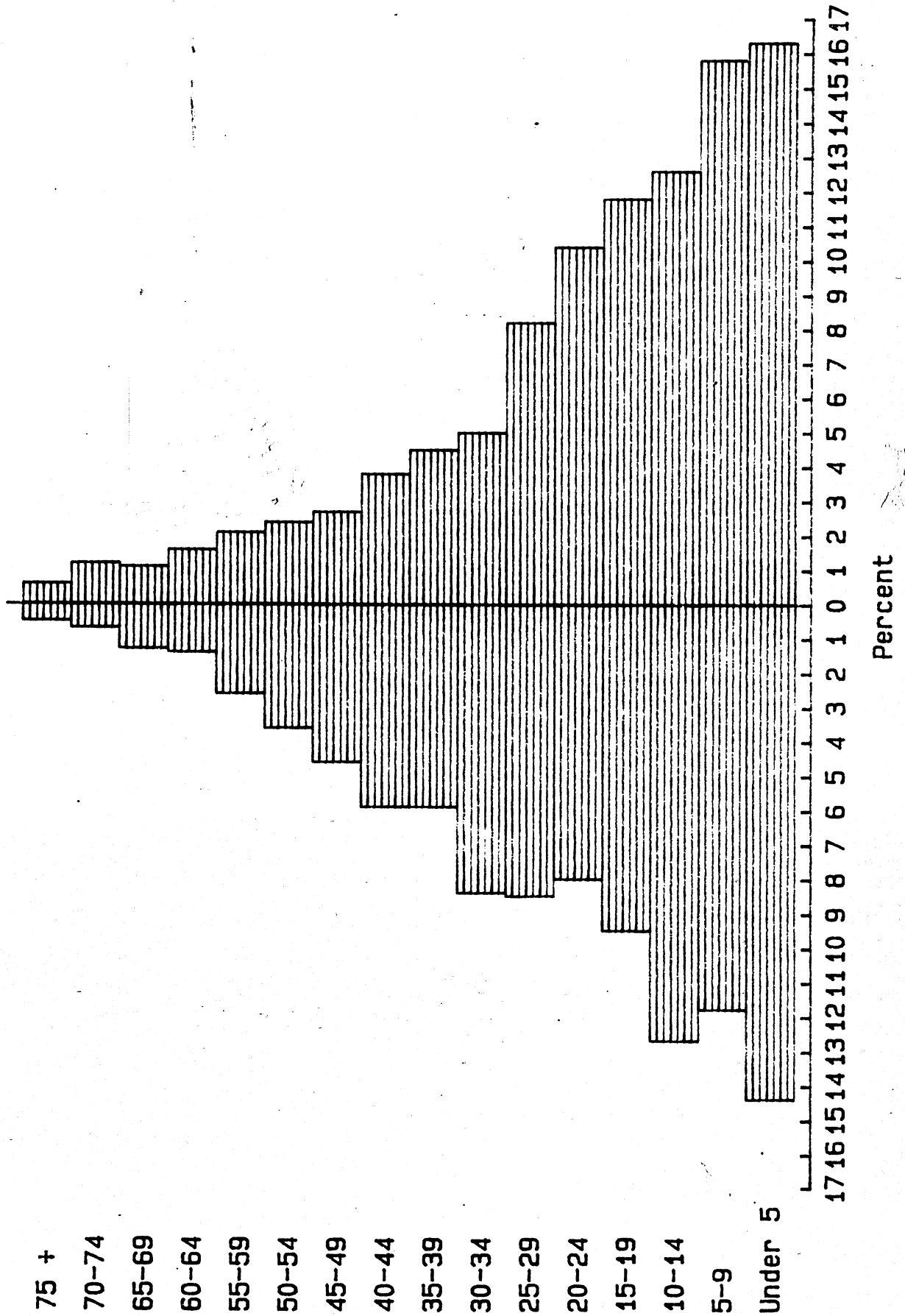


FIGURE 2.3

Age and Sex Distribution: 1980



native population was in this age group in 1967, by 1980 this group was 42 percent of the total population (it was 36 percent in 1973). For females, the percentage increased from 30 to 40 percent of the population between 1967 and 1980, while the percentage for males increased from 27 to 45 percent.

The median age in 1980 varied between the islands. On the Northern Islands, with its small population, and large number of children, the median was only 12 years (half of the population was over 12 and half was younger) (Table 2.3). Saipan's median was about the same as for the whole Commonwealth, but Tinian's population was somewhat younger (at 18 years), and Rota's population was somewhat older (at 20 years).

The percentage distribution on each island did not differ very much from the distribution for the total.

Table 2.3. Age Distribution By Island: 1980

Age Group	Island (Numbers)					Island (Percents)				
	Total	Sai-pan	Rota	Ti-nian	N. Is.	Total	Sai-pan	Rota	Ti-nian	N. Is.
Total	16780	14549	1261	866	104	100.0	100.0	100.0	100.0	100.0
0 to 4	2464	2122	196	130	16	15.5	14.7	14.6	15.5	15.5
5 to 9	2148	1830	163	126	29	12.9	12.8	12.6	12.9	12.9
10 to 14	2193	1902	149	125	17	11.8	13.1	13.1	11.8	11.8
15 to 19	1703	1501	114	79	9	9.0	10.1	10.3	9.0	9.0
20 to 24	1512	1327	111	67	7	8.8	9.0	9.1	8.8	8.8
25 to 29	1463	1274	113	72	4	9.0	8.7	8.8	9.0	9.0
30 to 34	1303	1147	87	61	8	6.9	7.8	7.9	6.9	6.9
35 to 39	864	773	52	35	4	4.1	5.1	5.3	4.1	4.1
40 to 44	824	724	60	38	2	4.8	4.9	5.0	4.8	4.8
45 to 49	660	573	59	26	2	4.7	3.9	3.9	4.7	4.7
50 to 54	496	430	34	29	3	2.7	3.0	3.0	2.7	2.7
55 to 59	388	326	29	32	1	2.3	2.3	2.2	2.3	2.3
60 to 64	267	221	32	13	1	2.5	1.6	1.5	2.5	2.5
65 to 69	228	187	28	13		2.2	1.4	1.3	2.2	2.2
70 to 74	139	107	16	15	1	1.3	.8	.7	1.3	1.3
75 & Over	128	105	18	5		1.4	.8	.7	1.4	1.4
Median...	19.6	19.7	20.4	17.8	11.8					

Source: PC80-1-B57A, Table 15.

Table 2.4 shows the population distribution for each five-year age group by island. Altogether, 87 percent of the CNMI population lived on Saipan, 8 percent on Rota, 5 percent on Tinian, and less than 1 percent in the Northern Islands in 1980. The distribution did not vary very much from this for the

younger age groups. However, proportionately more elderly were living on Rota and Tinian than on Saipan for the older ages, especially those over 60. For persons 70 to 74 for example, only 77 percent were living on Saipan, with 12 percent living on Rota, and another 11 percent on Tinian.

Table 2.4. Age Distribution by Island: 1980

Age Group	Total	Island (Numbers)				Island (Percents)			
		Sai-pan	Rota	Ti-nian	N. Is.	Sai-pan	Rota	Ti-nian	N. Is.
Total	16780	14549	1261	866	104	86.7	7.5	5.2	.6
0 to 4	2464	2122	196	130	16	86.1	8.0	5.3	.6
5 to 9	2148	1830	163	126	29	85.2	7.6	5.9	1.4
10 to 14	2193	1902	149	125	17	86.7	6.8	5.7	.8
15 to 19	1703	1501	114	79	9	88.1	6.7	4.6	.5
20 to 24	1512	1327	111	67	7	87.8	7.3	4.4	.5
25 to 29	1463	1274	113	72	4	87.1	7.7	4.9	.3
30 to 34	1303	1147	87	61	8	88.0	6.7	4.7	.6
35 to 39	864	773	52	35	4	89.5	6.0	4.1	.5
40 to 44	824	724	60	38	2	87.9	7.3	4.6	.2
45 to 49	660	573	59	26	2	86.8	8.9	3.9	.3
50 to 54	496	430	34	29	3	86.7	6.9	5.8	.6
55 to 59	388	326	29	32	1	84.0	7.5	8.2	.3
60 to 64	267	221	32	13	1	82.8	12.0	4.9	.4
65 to 69	228	187	28	13		82.0	12.3	5.7	0.0
70 to 74	139	107	16	15	1	77.0	11.5	10.8	.7
75 & Over	128	105	18	5		82.0	14.1	3.9	0.0

Source: PC80-1-B57A, Table 15.

The median age of males in the CNMI was 20.9 years, about 2 and 1/2 years older than the females. Males on Rota were the oldest, on average, with a median age of 22.6 years, about 4 and 1/2 years older than the females. Many of these males were probably involved in the heavy construction going on at the time of the census. The males on Tinian were about 5 years older than the females, while those in the Northern Islands were about 1 year older.

FIGURE 2.4

Age and Sex Distribution for Saipan: 1980

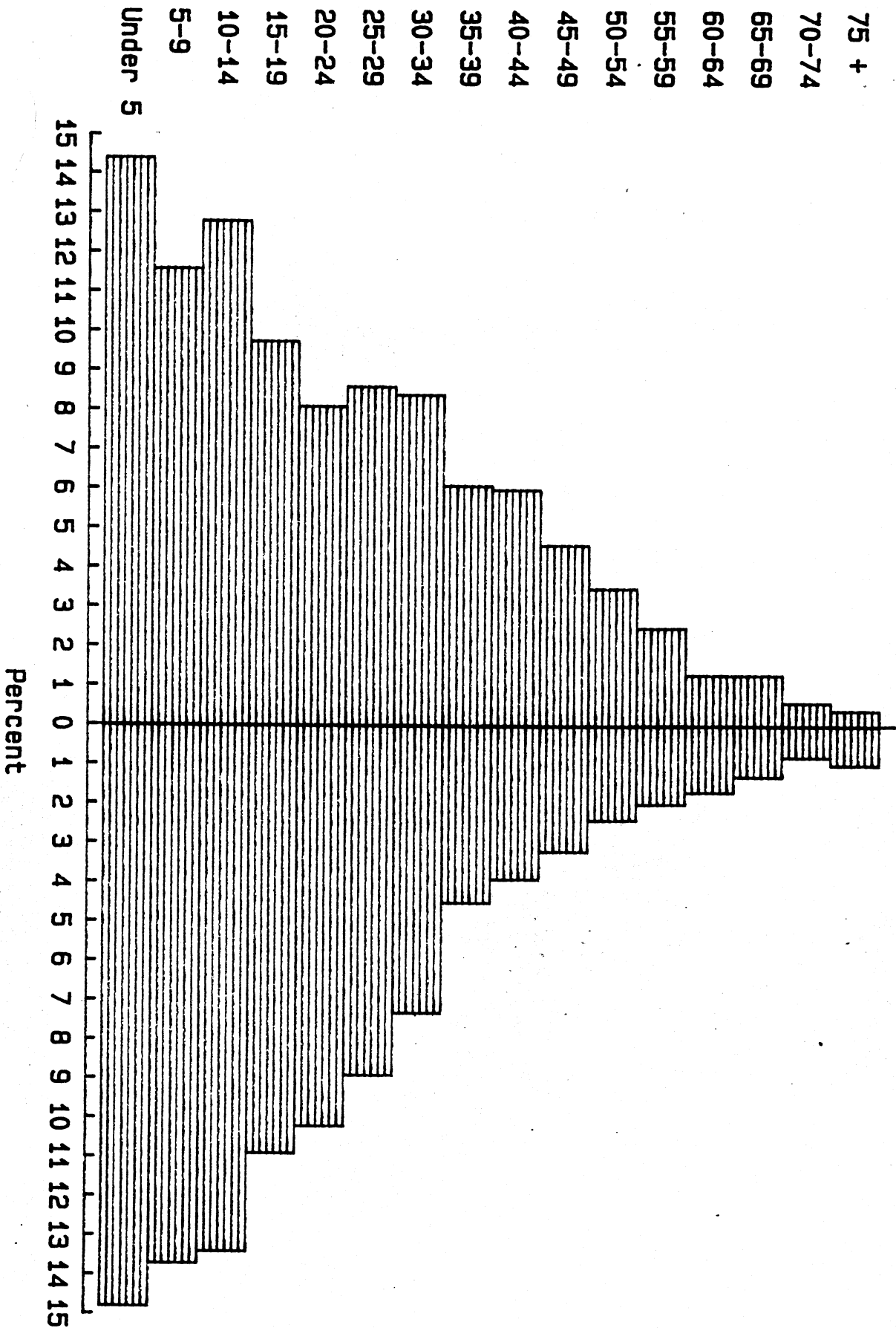


Table 2.5. Age and Sex Distribution, Males: 1980

Age Group	Total	Island (Numbers)				Island (Percents)			
		Sai-pan	Rota	Ti-nian	N. Is.	Sai-pan	Rota	Ti-nian	N. Is.
Total	8817	7586	696	475	60	100.0	100.0	100.0	100.0
0 to 4	1274	1094	109	61	10	14.4	15.7	12.8	16.7
5 to 9	1040	879	80	65	16	11.6	11.5	13.7	26.7
10 to 14	1119	970	75	66	8	12.8	10.8	13.9	13.3
15 to 19	842	739	56	41	6	9.7	8.0	8.6	10.0
20 to 24	709	617	53	35	4	8.1	7.6	7.4	6.7
25 to 29	753	654	61	35	3	8.6	8.8	7.4	5.0
30 to 34	743	640	58	40	5	8.4	8.3	8.4	8.3
35 to 39	520	459	37	22	2	6.1	5.3	4.6	3.3
40 to 44	520	452	41	25	2	6.0	5.9	5.3	3.3
45 to 49	404	348	38	17	1	4.6	5.5	3.6	1.7
50 to 54	315	265	26	22	2	3.5	3.7	4.6	3.3
55 to 59	225	188	17	20	0	2.5	2.4	4.2	0.0
60 to 64	125	101	15	8	1	1.3	2.2	1.7	1.7
65 to 69	119	98	12	9	0	1.3	1.7	1.9	0.0
70 to 74	65	49	8	8	0	.6	1.1	1.7	0.0
75 & Over	44	33	10	1	0	.4	1.4	.2	0.0
Median...	20.9	20.9	22.6	20.6	12.5				

Source: PC80-1-B57A, Table 15.

The median age of females on each of the islands (considering all the Northern Islands together), like the females in the whole commonwealth, was younger than the males. Women on the Northern Islands were about the same age as the males. Females on Saipan were about 1 year younger than the median for the whole population, and those on Rota and Tinian were two years younger. Much of this difference can probably be attributed to differential immigration of older males to these islands to work.

FIGURE 2.5

Age and Sex Distribution for Rota: 1980

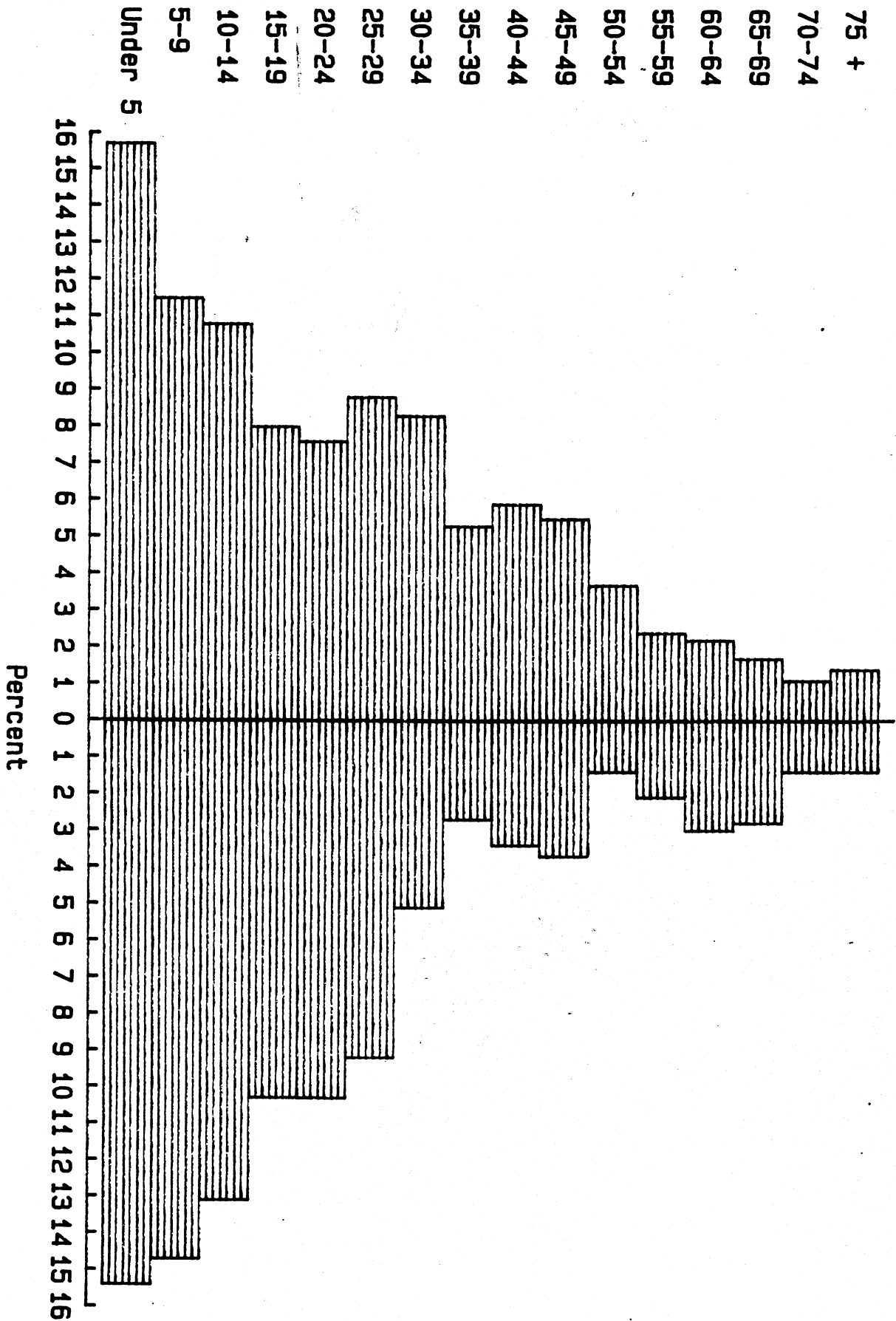


Table 2.6. Age and Sex Distribution, Females: 1980

Age Group	Total	Island (Numbers)				Island (Percents)			
		Sai-pan	Rota	Ti-nian	N. Is.	Sai-pan	Rota	Ti-nian	N. Is.
Total	7963	6963	565	391	44	100.0	100.0	100.0	100.0
0 to 4	1190	1028	87	69	6	14.8	15.4	17.6	13.6
5 to 9	1108	951	83	61	13	13.7	14.7	15.6	29.5
10 to 14	1074	932	74	59	9	13.4	13.1	15.1	20.5
15 to 19	861	762	58	38	3	10.9	10.3	9.7	6.8
20 to 24	803	710	58	32	3	10.2	10.3	8.2	6.8
25 to 29	710	620	52	37	1	8.9	9.2	9.5	2.3
30 to 34	560	507	29	21	3	7.3	5.1	5.4	6.8
35 to 39	344	314	15	13	2	4.5	2.7	3.3	4.5
40 to 44	304	272	19	13		3.9	3.4	3.3	0.0
45 to 49	256	225	21	9	1	3.2	3.7	2.3	2.3
50 to 54	181	165	8	7	1	2.4	1.4	1.8	2.3
55 to 59	163	138	12	12	1	2.0	2.1	3.1	2.3
60 to 64	142	120	17	5		1.7	3.0	1.3	0.0
65 to 69	109	89	16	4		1.3	2.8	1.0	0.0
70 to 74	74	58	8	7	1	.8	1.4	1.8	2.3
75 & Over	84	72	8	4		1.0	1.4	1.0	0.0
Median...	18.3	18.5	18.0	15.6	11.3				

Source: PC80-1-B57A, Table 15.

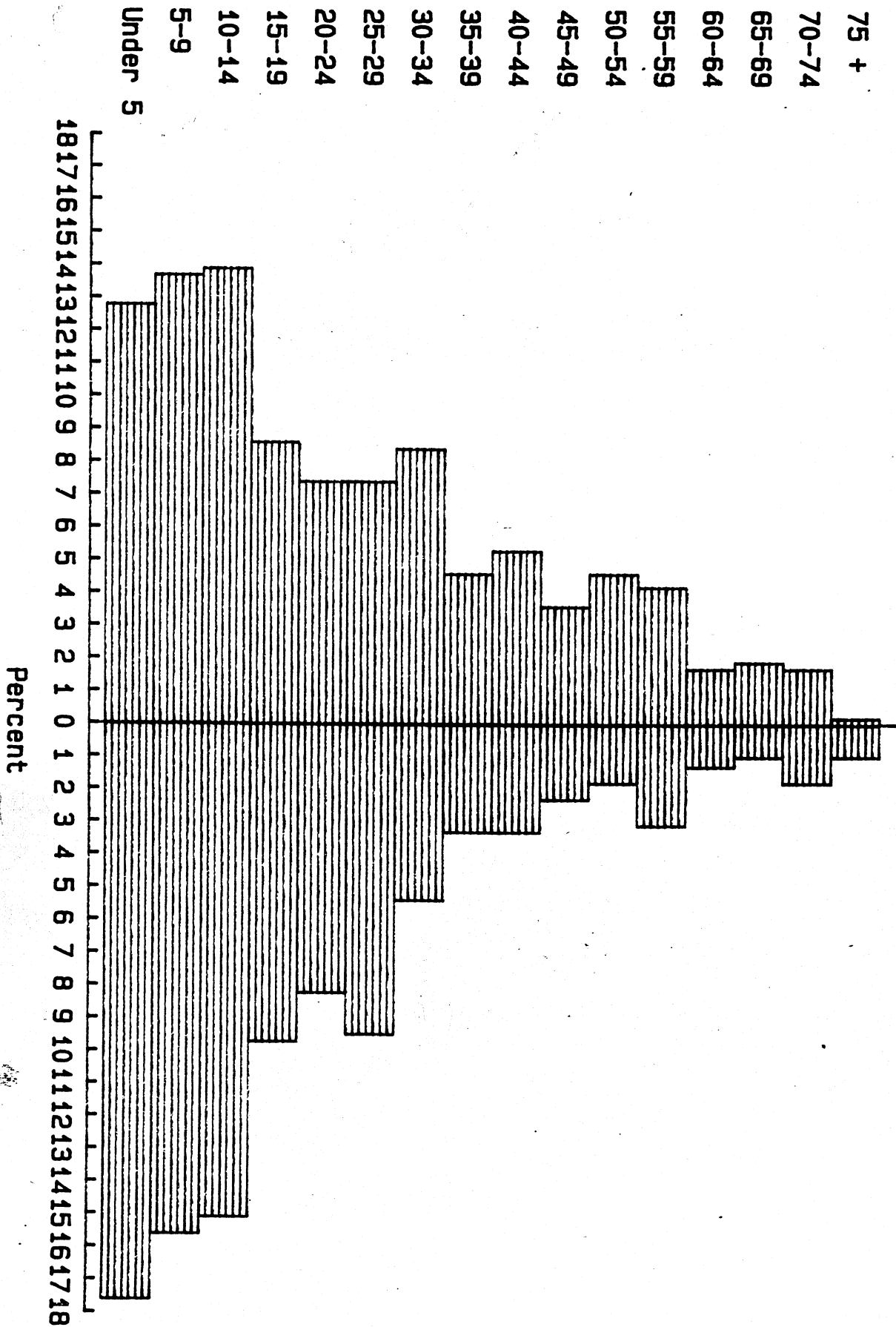
Because of differential immigration of males, the ratio of males to 100 females increased from 109 in 1973 to 111 in 1980. In 1980, there were more males than females on all islands, ranging from 109 on Saipan to 121 on Tinian, 123 on Rota, and 136 for the Northern Islands.

For the youngest ages for both 1973 and 1980, more males than females are born, on average, which is reflected in the greater proportions of males (except for the 5 to 9 year olds in 1980 which had a surplus of females). There were fewer males than females in the age groups 15 to 19 and 20 to 24, probably because males are somewhat more likely than females to leave the islands for schooling, jobs, or the military.

After age 25, the proportion of males increases rapidly. For the 1973 census, the greatest proportion male was for the 45 to 49 year olds, reaching 160 males per 100 females. This means that for every 5 males aged 45 to 49 there were only 3 females in the CNMI in 1973. For the elderly, except for the 60 to 64 year olds, there were more females, and for those 70 and over, there were less than 80 males for every 100 females.

FIGURE 2.6

Age and Sex Distribution for Tinian: 1980



Because of selective immigration, the proportion male for the middle ages was greater in 1980 than in 1973. The peaks were 171 males per 100 females for the 40 to 44 year olds and 174 males per 100 females for persons 50 to 54 years old. All of the islands (with the exception of the Northern Islands which had very small populations) had many more males than females in these age groups. There were more than 300 males per 100 females on Rota and Tinian in the 50 to 54 year old age group, meaning that there were more than 3 males for every female. For a number of the younger adult age groups on Rota there were 2 males for every female.

Table 2.7. Males per 100 Females by Island: 1980

Age Group	1980					
	1973	Total	Saipan	Rota	Tinian North Is.	
Total....	109	111	109	123	121	136
0 to 4....	106	107	106	125	88	167
5 to 9....	106	94	92	96	107	123
10 to 14....	108	104	104	101	112	89
15 to 19....	90	98	97	97	108	200
20 to 24....	88	88	87	91	109	133
25 to 29....	121	106	105	117	95	300
30 to 34....	149	133	126	200	190	167
35 to 39....	138	151	146	247	169	100
40 to 44....	148	171	166	216	192	...
45 to 49....	160	158	155	181	189	100
50 to 54....	122	174	161	325	314	200
55 to 59....	92	138	136	142	167	0
60 to 64....	127	88	84	88	160	...
65 to 69....	92	109	110	75	225	...
70 to 74....	70	88	84	100	114	0
75 and over.	77	52	46	125	25	...

Source: PC80-1-B57A, Table 15, and TTPI 1973 Census, Table 4a

The dependency ratio is obtained by dividing the sum of person 0 to 14 (children) and those 65 years and over (the elderly), by persons 15 to 64 (the working population). The dependency ratio shows the relationship between workers and consumers in a way. For example, a dependency ratio of 100 would mean that there was essentially one worker for each consumer. A ratio above 100 means that there were more consumers than workers, and a ratio below 100 indicates that there were more workers than consumers.

The dependency ratio in 1973 was 93, but this decreased to 77 in 1980, partly as a result of reduced fertility, and partly due to immigration of persons in the middle years. As noted earlier, the CNMI has a very small

number of elderly persons, and this was true for both censuses. Since the Northern Islands were not shown separately in 1973, change can not be measured. Nonetheless, the value of 154 (indicating 3 consumers for every 2 workers) was by far the highest in the CNMI in 1980, and the only islands which had a dependency ratio above 100. In 1973 both Rota and Tinian had more consumers than workers (dependency ratios above 100), with Tinian's 141 approaching the 3 to 2 level for the Northern Islands in 1980. The dependency ratio for Saipan actually increased slightly between 1973 and 1980.

Table 2.8. Dependency Ratio by Sex: 1973 and 1980

Sex	1980					1973				
	Total	Saipan	Rota	Tinian	N. Is.	Total	Saipan	Rota	Tinian	N. Is.
Total.....	77	75	82	92	154	93	70	110	141	*
Male.....	71	78	73	79	131	90	86	116	136	*
Female.....	84	73	96	109	193	94	95	109	148	*

Source: PC80-1-B57A, Table 15, and 1973 TTPI Census, Table 4a

Notes: Northern Islands included with Saipan in 1973, Dependency ratio is persons 0-14 and 65+ divided by persons 15-64 (times 100)

Table 2.9 shows another way of displaying the sex ratios for the CNMI. As noted before, there are usually more males than females in a population; the reverse is true for the CNMI. The population was slightly more male in 1980 than in 1973, with the excess of males reaching 10 percentage points on Rota and Tinian in 1980, and 15 percentage points on the Northern Islands. The age-child ratio was also highest for Rota at 12 percent.

Table 2.9. Age and Sex Characteristics by Island: 1973 and 1980

Characteristics	1980						
	1973	Total	Saipan	Rota	Tinian	North Is.	
Percentage Male.....	52.2	52.5	52.1	55.2	54.8	57.7	
Excess of Males.....	4.4	5.1	4.3	10.4	9.7	15.4	
Age-Child Ratio.....	5.8	7.3	6.8	12.2	8.7	1.6	
Male.....	5.4	6.6	6.1	11.4	9.4	0.0	
Female.....	6.9	7.9	7.5	13.1	7.9	3.6	

Source: PC80-1-B57A, Table 15, and 1973 TTPI Census, Table 4a

This chapter has described the age and sex composition in the Commonwealth of the Northern Mariana Islands using recent censuses. Detailed age and sex distributions as they relate to various social and economic characteristics are described in the following chapters.

FIGURE 2.7

